

Features

- Featuring durable, beautiful water-based finishes that are better for the environment
- Two solid-wood drawers with dovetail construction
- Soft-close undermount drawer slides for smooth opening
- Full-extension 21" (533 mm) deep drawer provides ample storage
- Customize your storage with optional accessories such as electrical outlets, drawer organizers, and containers (sold separately)
- Coordinates with K-33561 Harken 13" (330 mm) cabinet pulls and K-99680-SH18 Harken 36" (914 mm) roll-out tray (sold separately)
- Combines with Silestone™ prefabricated quartz vanity tops, backsplashes, and side splashes, and KOHLER sinks (sold separately)

Material

- Plywood and moisture-resistant MDF
- The nature of wood grain can cause variations in stain depth. Our expert craftspeople hand-apply the stain to blend these variations

Installation

- Professional installation recommended

Required Products/Accessories

- K-28250 Silestone® 37" quartz vanity top with rectangular cutout
- K-28263 Silestone® quartz 37" backsplash
- K-2882 19-3/4" rectangular undermount bathroom sink
- K-33561 11-1/2" cabinet pull

Recommended Products/Accessories

- K-99680-SH18 Roll-out tray for 36" vanity

Optional Products/Accessories

- K-28251 Silestone® 37" quartz vanity top with oval cutout
- K-28252 Silestone® 37" quartz vanity top with rectangular cutout for Carillon® sink
- K-28266 Silestone® quartz side splash
- K-2881 19-1/4" oval undermount bathroom sink
- K-7799 21-1/4" rectangular drop-in bathroom sink, no overflow
- K-99682 General storage package for KOHLER Tailored® vanities
- K-99683 Makeup storage package for KOHLER Tailored® vanities
- K-99684 Drawer divider package for KOHLER Tailored® vanities



Codes/Standards

EPA TSCA Title VI/CARB P2



KOHLER® One-Year Limited Warranty

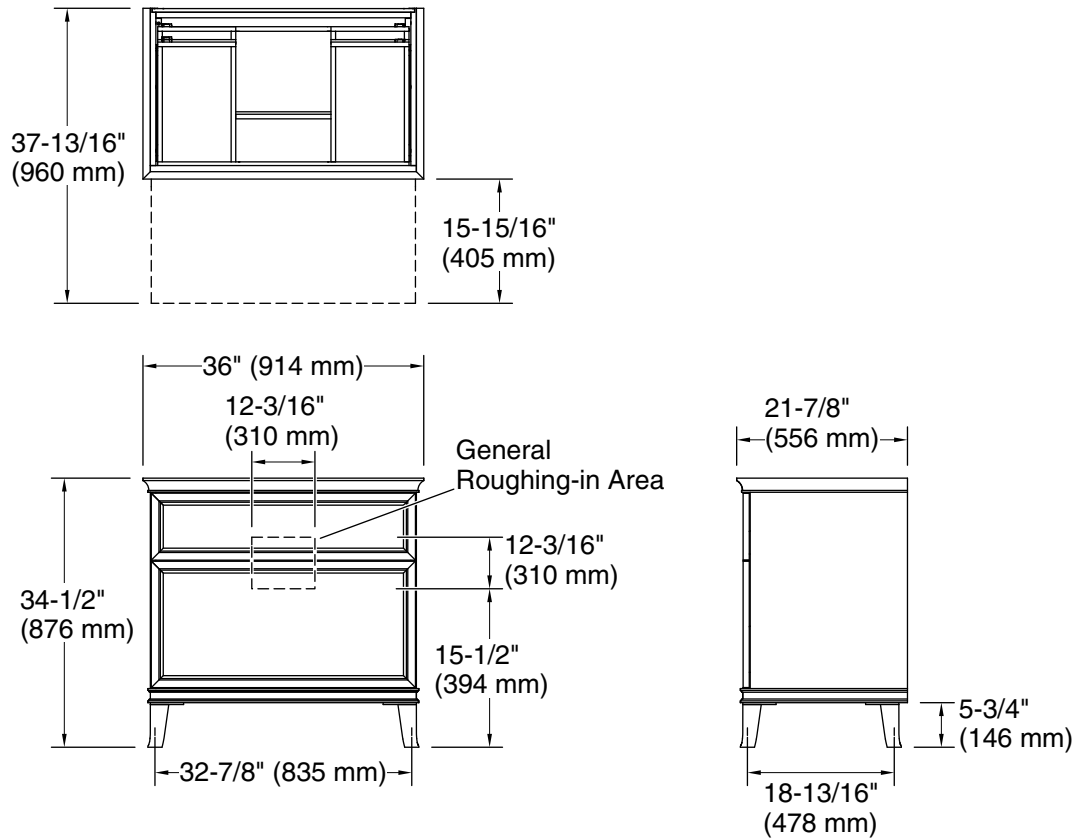
See website for detailed warranty information.

Available Colors/Finishes

Color tiles intended for reference only.

Color	Code	Description
-------	------	-------------

	1WA	Linen White
	1WX	Grey Slate



Technical Information

All product dimensions are nominal.

Notes

Install this product according to the installation instructions.