

# 8. REPAIR PARTS

Repair parts are available from your local PB Heat, LLC distributor or from Parts To Your Door at 1 (610) 916-5380 (www.partstoyourdoor.com).

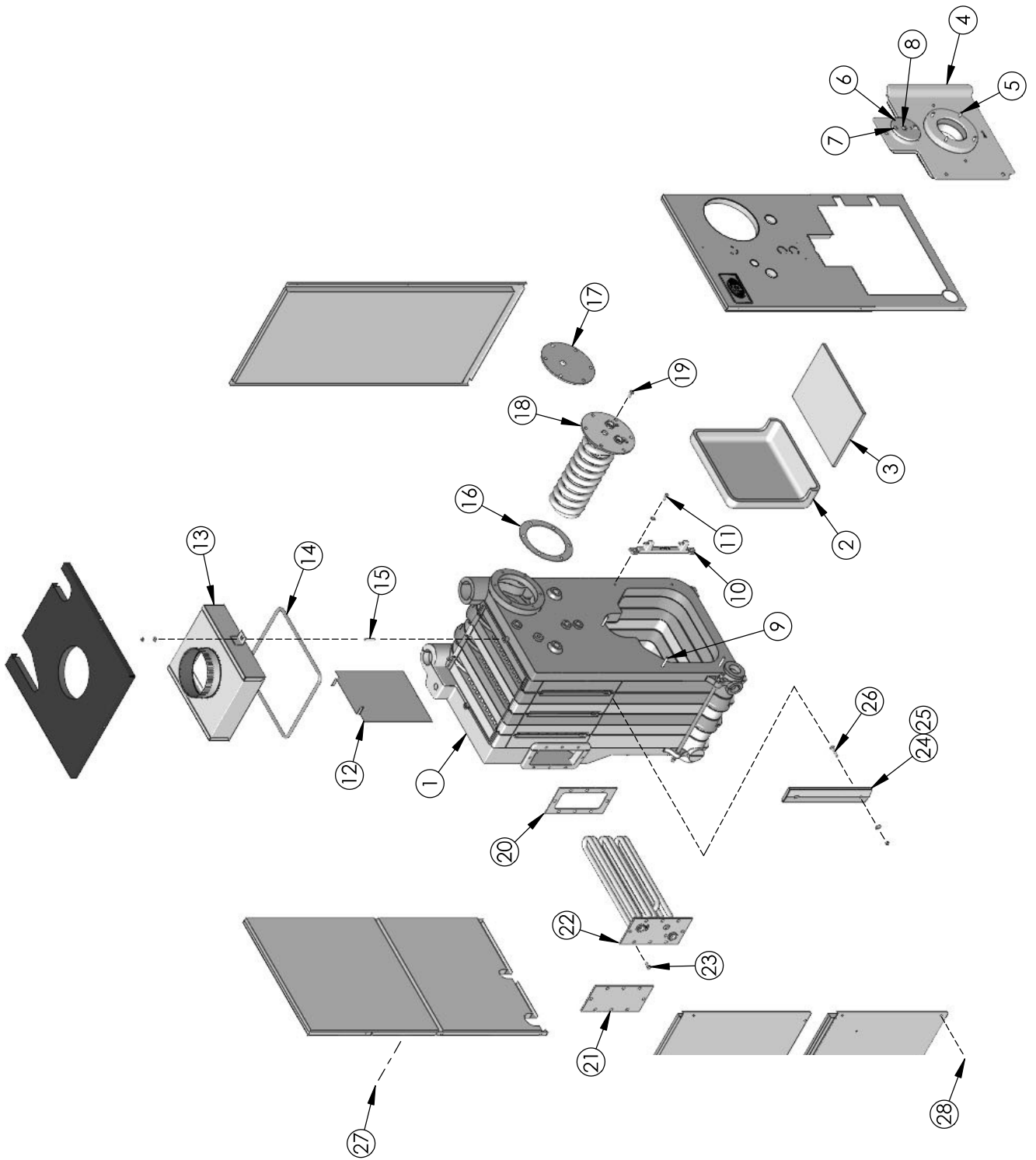
Note: Remember to include the boiler model number and serial number when ordering parts.

**Table 8.1**

	Description	Quantity Required	Stock Code		Description	Quantity Required	Stock Code
1	Block Assembly – EC-e-03	–	90662	14	Flue Collector Rope Seal, 1/2"	7 ft.	51211
	Block Assembly – EC-e-04	–	90663	15	Stud, 1/4-20 x 1-3/4" Lg.	2	51751
	Block Assembly – EC(-e)-05	–	90657	16	Round Cover Plate Gasket	1	51800
	Block Assembly – EC-06	–	90661	17	Round Cover Plate w/ Gasket & Screws	1	99812
	Block Assembly – ECT-e-03	–	90664	18	Tankless Coil – EC WPCT – X-1020-C w/ Gasket & Screws	1	90534
	Block Assembly – ECT-e-04	–	90665	19	Cap Screw, Hex Hd., 3/8-16 x 3/4" Lg.	6	99788
	Block Assembly – ECT(-e)-05	–	90658	20	Rectangular Gasket (ECT(-e) Models)	1	90547
	Block Assembly – ECT-06	–	90660	21	Rect. Cover Plate w/ Gasket & Screws	1	90140
2	Target Wall	–	50768	22	Tankless Coil ECT(-e) SPT – X-1082-C w/ Gasket & Screws	1	90546
3	Base Liner, 1/2" x 14" x 6" (03)	–	50857	23	Cap Screw, Hex Hd., 3/8-16 x 3/4" Lg.	8	99788
	Base Liner, 1/2" x 14" x 10-1/2" (04)	–	50858	24	Side Clean Out Plate Kit, X-1087 (03)	1	50721
	Base Liner, 1/2" x 14" x 18-3/4" (05/06)	–	50846		Side Clean Out Plate Kit, X-1087-1 (04)	1	50722
–	Combustion Chamber Insulation Kit	1	50661		Side Clean Out Plate Kit, X-1087 (05)	2	50721
4	Burner Mounting Plate Assembly for Standard Door	1	93530		Side Clean Out Plate Kits, X-1087 & X-1087-1 (06)	1 each	50721 50722
5	Stud, 5/16-18 x 1" Lg. (Burner to Plate)	4	51748	25	Insulation Board Only for Side Clean Out Plates	1 per flue	50800
–	Burner Mounting Plate Insulation	1	50765	26	Carriage Bolt, 5/16-18 x 1-3/4" Lg.	2 per flue	93997
–	Insulation Hardware for Burner Mtg. Plate	1	95016	27	Machine Screw, Truss Hd., 1/4-20 x 3/8" Lg. (Jacket to Block)	2	91590
–	Burner Mounting Plate Rope, 3/8" MD	6 ft.	55521	28	Screw, #10 x 1/2" Lg., SMS	18	99992
6	Observation Door Round Cover Plate	1	51677	<b>*** JACKETS SOLD ONLY AS ASSEMBLY ***</b>			
7	Machine Screw, 5/16-18 x 3/4" Lg. (To Mount Observation Door)	1	99802	–	EC(T)-e-03	–	90278
8	Machine Screw, 3/8-16 x 1/2" SS (Observation Port)	1	7511	–	EC(T)-e-04	–	90279
9	Stud, 5/16-18 x 2-1/4" Lg. (Plate to Block)	3	51747	–	EC(T)(-e)-05	–	90280
10	Burner Mounting Plate Internal Hinge	1	51149	–	EC(T)-06	–	90281
11	Bolt, Hex Hd., 5/16-18 x 5/8" Lg. (Hinge to Block)	2	91588				
	Flue Baffle - EC(T)-e-03	2	51613				
	Flue Baffle - EC(T)-e-04	3					
Flue Baffle - EC(T)-e-05 (For use on Low and Middle rates only)	4						
13	Flue Collector & Side Clean Out Assy. w/ Hardware & Rope/Insulation EC(T)-e-03, EC-5000	–	99536				
	Flue Collector & Side Clean Out Assy. w/ Hardware & Rope/Insulation EC(T)-e-04, EC-5000-1	–	99537				
	Flue Collector & Side Clean Out Assy. w/ Hardware & Rope/Insulation EC(T)(-e)-05, EC-5000-2	–	99538				
	Flue Collector & Side Clean Out Assy. w/ Hardware & Rope/Insulation EC(T)-06, EC-5000-3	–	99539				

Part numbers may be subject to change without notice.

Continued on P. 30



**Figure 8.1: Boiler Exploded View**

## REPAIR PARTS

**Table 8.1 (Continued from P. 28)**

Item No.	Description	Quantity Required	Stock Code
-	Burner Harness with 4-pin connector, Beckett / Carlin - 21" Lg. Conduit	1	50919
-	Burner Harness with 4-pin connector, Riello - 28" Lg. Conduit	1	50922
-	Heyco bushing at junction box (holds 4-pin connectors) - Steam and KnockDown boilers	1	7957
-	6" Draft Regulator	1	90724
-	7" Draft Regulator	1	90725
-	8" Draft Regulator	1	90726
-	9" Draft Regulator	1	90727
<b>Steam Trim</b>			
-	Pressure Control, PA404A	1	50549
-	Siphon, 1/4" NPT, 90° Brass - Probe Boilers	1	6667
-	Siphon, 1/4" NPT, 180° Brass - Float Boilers	1	6666
-	9-1/4" Gauge Glass, w/ Valves & Rods - Probe Boilers	1	50526
-	7-1/4" Gauge Glass, w/ Valves & Rods - Float Boilers	1	50513
-	LWCO, Hydrolevel CG450, w/ EL1214 Probe - Probe Boilers	1	29041
-	LWCO, McDonnell & Miller 67PE-2 - Float Boilers	1	29003
-	Safety Relief Valve, 3/4"NPT, 15 PSIG	1	50510
-	Pressure Gauge, 2-1/2 RD, 0-30#, 1/4" NPT	1	51325
-	Drain Valve, 3/4" NPT	1	50764
-	Harness, Probe to Junction Box - Package Probe Boilers	1	X7085
-	Harness, Probe to Limit Control - Package Probe Boilers	1	EC7021
-	Harness, Float to Limit Control & Junction Box - Package Float Boilers	1	EC7026
-	Stub harness with 4-pin connector (mates with burner harness at junction box) - KnockDown Steam Boilers	1	EC7025
-	Flue Collector Cover Plate - WBV-04	-	90566
<b>Water Trim</b>			
-	Limit Control, Hydrolevel 3250, w/ Sensor	1	50343
-	Sensor for Hydrolevel 3250, 10" Long	1	54522
-	Well, 3/4" NPT, Long shank, Hydrolevel 48-202	1	50792
-	3/4" Safety Relief Valve, 30 psi	1	50501
-	Temp/Press Gauge, 2-1/2 RD, 320°F, 0-75#, 1/4" NPT	1	51324
-	Drain Valve, 3/4" NPT	1	50764
-	Harness, Limit Control to Burner - Package Water Boilers	1	54511
-	Harness, Limit Control to Jbox/Burner - KnockDown Water Boilers	1	54554
-	Harness, Circulator - Package Water Boilers	1	X7083
-	Switch, Round Toggle, 120 VAC - Package Water Boilers	1	6050