



260 North Elm Street  
Westfield, MA 01085  
tel. (413) 564-5555  
fax (413) 572-3764  
www.sterlingheat.com

7555 Tranmere Drive  
Mississauga, Ontario L5S 1L4 Canada  
tel: (905) 670-5888  
fax: (905) 670-5782  
www.mestekcanada.com

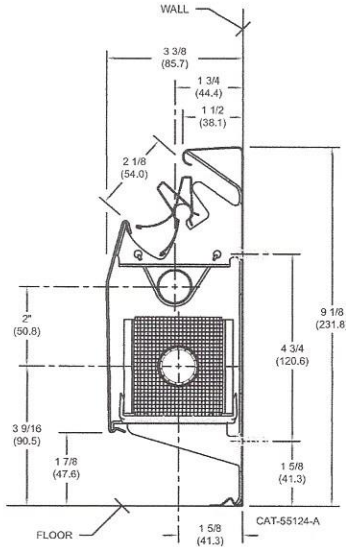
PRICE SHEET: NST-23  
EFFECTIVE: 7/1/16  
SUPERSEDES: NST-22



# NST-800 High Output Hydronic Baseboard Radiation



## DIMENSIONAL DATA



NOTE: DIMENSIONS IN " ARE SHOWN IN MILLIMETERS.



## RATINGS

Model	GPM	Average Hot Water Temperature - BTU/HR./LIN. FT.						
		120°F	130°F	140°F	150°F	160°F	170°F	180°F
800 3/4"	4	308	386	470	560	650	750	850
	1	292	366	445	530	620	710	800
800 1"	4	297	373	454	540	630	730	820
	1	281	352	428	510	600	690	780

## CORRECTION FACTORS

If the calculated water flow rate through a baseboard is greater than the standard flow rate (1 GPM), the rating of that unit may be increased by multiplying the standard water rating at 1 GPM by the factor shown for the actual flow rate. All ratings based on 65°F entering air temperature.

### WATER FLOW CORRECTION FACTORS

G.P.M.	Heat Output Factor	Pressure Drop – Millinches Per Ft. Copper Element Tube Size	
		3/4"	1"
1.0	1.000	47	13
1.5	1.016	96	26
2.0	1.028	157	43
2.5	1.038	230	63
3.0	1.045	320	87
3.5	1.051	420	114
4.0	1.057	525	145
4.5	1.062	650	178
5.0	1.067	775	216
6.0	1.074	1060	290








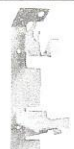


## SUNTEMP NST-800 BASEBOARD - WHITE

Unit	Catalog Number	Unit Length	Lin. Feet Per Crtn.	Approx Pkgd. Shipping Wt.	Package Contents
	800CU75-8	8'	8'		
Enclosure and 3/4" Element Complete Assembled Single Pack	800CU75-7	7'	7'	3.6 lbs. per lin. ft.	Contains one length each of back panel, front panel, damper-louver and 3/4" heating element, plus required support brackets and element expansion cradles. Panel joiner included with lengths of 5', 6' and 8'.
	800CU75-6	6'	6'		
	800CU75-5	5'	5'		
	800CU75-4	4'	4'		
	800CU75-3	3'	3'		
	800CU75-2	2'	2'		
	800CU100-8	8'	8'		
Enclosure and 1" Element Assembled Single Pack	800CU100-7	7'	7'	3.6 lbs. per lin. ft.	Contains one length each of back panel, front panel, damper-louver and 1" heating element, plus required support brackets and element expansion cradles. Panel joiner included with lengths of 5', 6' and 8'.
	800CU100-6	6'	6'		
	800CU100-5	5'	5'		
	800CU100-4	4'	4'		
	800CU100-3	3'	3'		
	800CU100-2	2'	2'		
	800CO-8	8'	8'		
Enclosure Only Assembled Single Pack	800CO-7	7'	7'	2.9 lbs. per lin. ft.	Contains one length each of back panel, front panel, damper-louver plus required support brackets. Panel joiner included with lengths 5', 6' and 8'.
	800CO-6	6'	6'		
	800CO-5	5'	5'		
	800CO-4	4'	4'		
	800CO-3	3'	3'		
	800CO-2	2'	2'		
	E75-8	8'	8'		
3/4" Element Only Single Pack	E75-7	7'	7'	0.9 lbs. per lin. ft.	Contains one length each of element plus required element expansion cradles.
	E75-6	6'	6'		
	E75-5	5'	5'		
	E75-4	4'	4'		
	E75-3	3'	3'		
	E75-2	2'	2'		
	E100-8	8'	8'		
1" Element Only Single Pack	E100-7	7'	7'	1.0 lbs. per lin. ft.	Contains one length each of element plus required element expansion cradles.
	E100-6	6'	6'		
	E100-5	5'	5'		
	E100-4	4'	4'		
	E100-3	3'	3'		
	E100-2	2'	2'		

**NOTE:** Shipped on pallets - standard pallet quantity is 40 cartons.

## SUNTEMP NST-800 ACCESSORIES - WHITE

	Description	Catalog Number	Master Carton Quantity	Master Carton Shipping Wt.
	3" Solid End Cap, Right Hand	800-3REC	10	10.2 lbs.
	3" Solid End Cap, Left Hand	800-3LEC	10	10.2 lbs.
	4" Solid End Cap, Right Hand	800-4REC	8	10.8 lbs.
	4" Solid End Cap, Left Hand	800-4LEC	8	10.8 lbs.
	4" Hinged End Cap, Right Hand	800-REC	12	11.3 lbs.
	4" Hinged End Cap, Left Hand	800-LEC	12	11.3 lbs.
	90° Inside Corner	800-IC	12	4.5 lbs.
	135° Inside Corner	800-ICB	As Ordered	0.8 lbs. ea.
	90° Outside Corner	800-OC	10	10 lbs.
	135° Outside Corner	800-OCB	As Ordered	1.3 lbs. ea.
	4" Wall Trim To Floor	800-WJ	12	9.6 lbs.
	2" Panel Joiner (3 piece)	800-PJ3	12	3.6 lbs. ea.
	14" Filler Piece Set (3 pieces)	800-FIS	As Ordered	2 lbs. ea.
	Support Bracket & Nylon Cradle	800-BR	As Ordered	0.5 lbs. ea.
	Element Slide Cradle	800-ESC	12	0.5 lbs.
	Supply Tubing Lower Hanger	800-STH	As Ordered	-
	Return Tubing Upper Hanger	800-RTH	As Ordered	-
	Touch-Up Spray Paint	NST-TUP	6	3 lbs.

Add \$40.00 list for each style of accessory when ordering less than carton quantity.