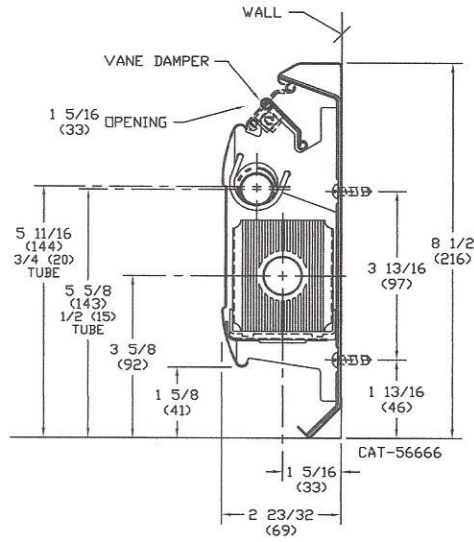


Hydronic Baseboard Radiation



DIMENSIONAL DATA



NOTE: DIMENSIONS IN "()" ARE SHOWN IN MILLIMETERS.



RATINGS

Model	GPM	Average Hot Water Temperature - BTU/HR./LIN. FT.						
		120°F	130°F	140°F	150°F	160°F	170°F	180°F
KP-50-2 3/4"	4	231	290	350	420	490	560	620
	1	220	276	340	400	460	530	590
KP-50-2 1/2"	4	237	297	360	430	500	570	640
	1	226	283	345	410	470	540	610

CORRECTION FACTORS

If the calculated water flow rate through a baseboard is greater than the standard flow rate (1 GPM), the rating of that unit may be increased by multiplying the standard water rating at 1 GPM by the factor shown for the actual flow rate. All ratings based on 65°F entering air temperature.

WATER FLOW CORRECTION FACTORS

G.P.M.	Heat Output Factor	Pressure Drop - Millinches Per Ft. Copper Element Tube Size	
		3/4"	1/2"
1.0	1.000	47	260
1.5	1.016	96	520
2.0	1.028	157	850
2.5	1.038	230	1270
3.0	1.045	320	1730
3.5	1.051	420	2290
4.0	1.057	525	2880
4.5	1.062	650	3600
5.0	1.067	775	4300
6.0	1.074	1060	5900









KOMPAK BASEBOARD - WHITE

Unit	Catalog Number White		Unit Length	Lin. Feet Per Crtn.	Approx. Pkgd. Shipping Wt.	Package Contents
Enclosure and 3/4" Element Complete Assembled Single Pack	WKP8A-3		8'	8'	19.2 lbs.	Contains one length each of front and back panel, damper vane, support brackets, slide shoes, and 3/4" heating element. Splice plates included with lengths of 5', 6' and 8'.
	WKP7A-3		7'	7'	16.8 lbs.	
	WKP6A-3		6'	6'	14.4 lbs.	
	WKP5A-3		5'	5'	12.0 lbs.	
	WKP4A-3		4'	4'	9.6 lbs.	
	WKP3A-3		3'	3'	7.2 lbs.	
Enclosure and 1/2" Element Complete Assembled Single Pack	WKP8A-2		8'	8'	19.2 lbs.	Contains one length each of front and back panel, damper vane, support brackets, slide shoes, and 1/2" heating element. Splice plates included with lengths of 5', 6' and 8'.
	WKP7A-2		7'	7'	16.8 lbs.	
	WKP6A-2		6'	6'	14.4 lbs.	
	WKP5A-2		5'	5'	12.0 lbs.	
	WKP4A-2		4'	4'	9.6 lbs.	
	WKP3A-2		3'	3'	7.2 lbs.	
Enclosure Only Assembled Single Pack	WJ-1-8A		8'	8'	16 lbs.	Contains one length each of front and back panel, damper vane, and support brackets. Splice plates included with lengths of 5', 6' and 8'.
	WJ-1-7A		7'	7'	14 lbs.	
	WJ-1-6A		6'	6'	12 lbs.	
	WJ-1-5A		5'	5'	10 lbs.	
	WJ-1-4A		4'	4'	8 lbs.	
	WJ-1-3A		3'	3'	6 lbs.	
Element Only Four Pack	WJ-1-2A		2'	2'	4 lbs.	Contains four lengths each heating element, plus required element slide shoes.
	3/4"	1/2"				
	E8-3	E8-2	8'	32'	22.4 lbs.	
	E7-3	E7-2	7'	28'	19.6 lbs.	
	E6-3	E6-2	6'	24'	16.8 lbs.	
	E5-3	E5-2	5'	20'	14.0 lbs.	
	E4-3	E4-2	4'	16'	11.2 lbs.	
	E3-3	E3-2	3'	12'	8.4 lbs.	
	E2-3	E2-2	2'	8'	5.6 lbs.	

NOTE: Shipped on pallets - standard pallet quantity is 65 cartons.

KOMPAK ACCESSORIES - WHITE

Description	Catalog Number White	Master Carton Quantity	Master Carton Shipping Wt.
 2-1/2" End Cap, Left Hand	WJ-3AL	12	4.7 lbs.
2-1/2" End Cap, Right Hand	WJ-3AR	12	4.7 lbs.
4-1/4" End Cap, Left Hand	WJ-8AL	12	10.0 lbs.
4-1/4" End Cap, Right Hand	WJ-8AR	12	10.0 lbs.
6" End Cap, Left Hand	WJ-4L	10	6.3 lbs.
6" End Cap, Right Hand	WJ-4R	10	6.3 lbs.
 4-1/4" Hinged End Cap, Left Hand	WJ-8L	6	5.2 lbs.
4-1/4" Hinged End Cap, Right Hand	WJ-8R	6	5.2 lbs.
 90° Inside Corner	WJ-5	12	2.7 lbs.
135° Inside Corner	WJ-5B	10	2.3 lbs.
 90° Outside Corner	WJ-6	8	5.2 lbs.
135° Outside Corner	WJ-6B	4	2.6 lbs.
 2-1/2" Trim Strip	WJ-9A	10	2.0 lbs.
4-1/4" Trim Strip	WJ-9C	10	2.8 lbs.
6" Trim Strip	WJ-9B	12	3.5 lbs.
 2" Splice Plate (3 pcs.)	WJ-17	24	4.0 lbs.
14" Fill-In Section (B/P, (2) Brackets, Damper, Valve)	WJ-16	As Ordered	2.5 lbs. ea.
Support Bracket, Slide Shoe and Damper Carrier	J-7	24	7.3 lbs.
Damper Joiner Pin	J-12	50	—
Supply Tubing Pipe Support (lower)	J-13	50	—
Return Tubing Pipe Hanger (upper)	J-11	50	0.7 lbs.
Slide Shoe	J-7S	As Ordered	—
Damper Carrier	J-7D	As Ordered	—
Touch-Up Spray Paint	WKP-TUP	6	3.0 lbs.