



Advanced Heating
& Hot Water Systems

www.htproducts.com

EVERLAST®

RESIDENTIAL

Stainless Steel Electric Water Heater



**BUILT
TO LAST
LONGER**

**40 Gallons
and
52 Gallons**

Limited 8 Year,
12 Year or
LIFETIME
Residential
Warranty Options
(with online registration)

**NO ANODE
RODS NEEDED
RESISTS
SCALE BUILD UP
LIGHT
WEIGHT**



A BRAND OF  **ARISTON**
THERMO USA

Industry Best Lifetime Warranty

EVERLAST®

Stainless Steel Electric Water Heater

THERMOSTAT AND HIGH LIMIT CONTROLS:

Residential Temp: Min 110°F Max 150°F

HOT WATER CONNECTION:

Outlet connection on the top of the tank (with built in Heat Traps)

THE FINEST PROTECTION:

Laser welded through a concentrated heat source producing high quality, long lasting, 316L stainless steel tank construction (**lightweight**) - Superior corrosion resistance, eliminates the need for anode rods, protects against harsh water conditions for a lifetime of durability against leaks - Fantastic Limited Warranty

MINIMAL HEAT LOSS:

Heavy-duty insulation

TITANIUM ELEMENTS:

Low watt operation; Highest quality titanium elements; Increases corrosion resistance for extended, longer element life



STANDARD FEATURES

- 316L Stainless Steel Tank
- Heavy Duty Insulation
- Electrical Connection Box
- 2 Titanium Elements
- Limited 8 Year, 12 Year or Lifetime Residential Warranty Options (When registered online) for Residential Unit

IN THE BOX

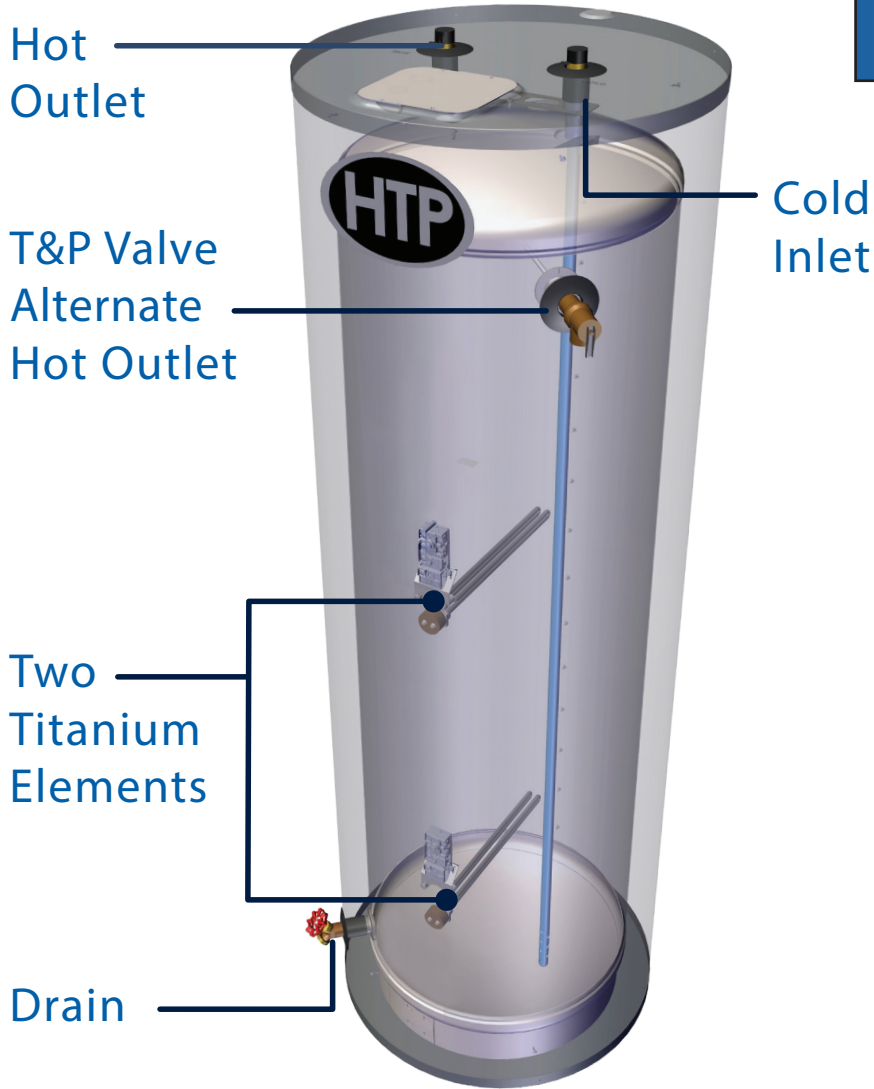
- T & P Relief Valve
- Installation Manual
- Brass Full Port Drain Valve

**NO ANODE
RODS NEEDED
RESISTS
SCALE BUILD UP
LIGHT-
WEIGHT**

EVERLAST ELECTRIC : 316L STAINLESS STEEL WATER HEATER

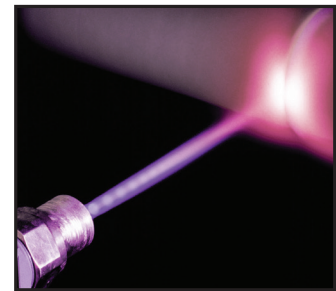
The Everlast Electric Water Heater combines high quality stainless steel construction and energy efficient operation, providing long draws of hot water without consuming large amounts of energy. A cleverly designed water connection directs cold water to the heating element near the bottom of the tank to minimize the mixing of cold and hot water. Durable components, low standby heat losses, high recovery rates, and the industry's strongest warranty make the Everlast Electric Water Heater an ideal choice for electric water heating needs.

A Closer Look



The Inlet & Outlet have Built in Heat Traps, Keeping the Heat in the Tank for Greater Efficiency

316L Stainless Steel - Laser Welded Tank



Our Components are Made of Durable Materials:

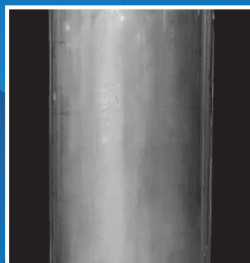
Inlet and Outlet Nipples Constructed of Durable Brass

Titanium Elements

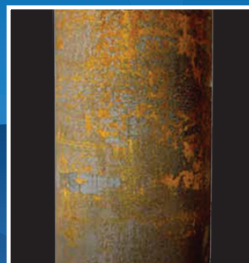
Made with High Grade 316L Stainless Steel Materials

The Advantages

Stainless Steel VS Glass-Lined



HTP's Stainless Steel Tank
Lightweight

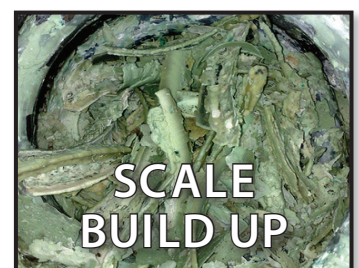


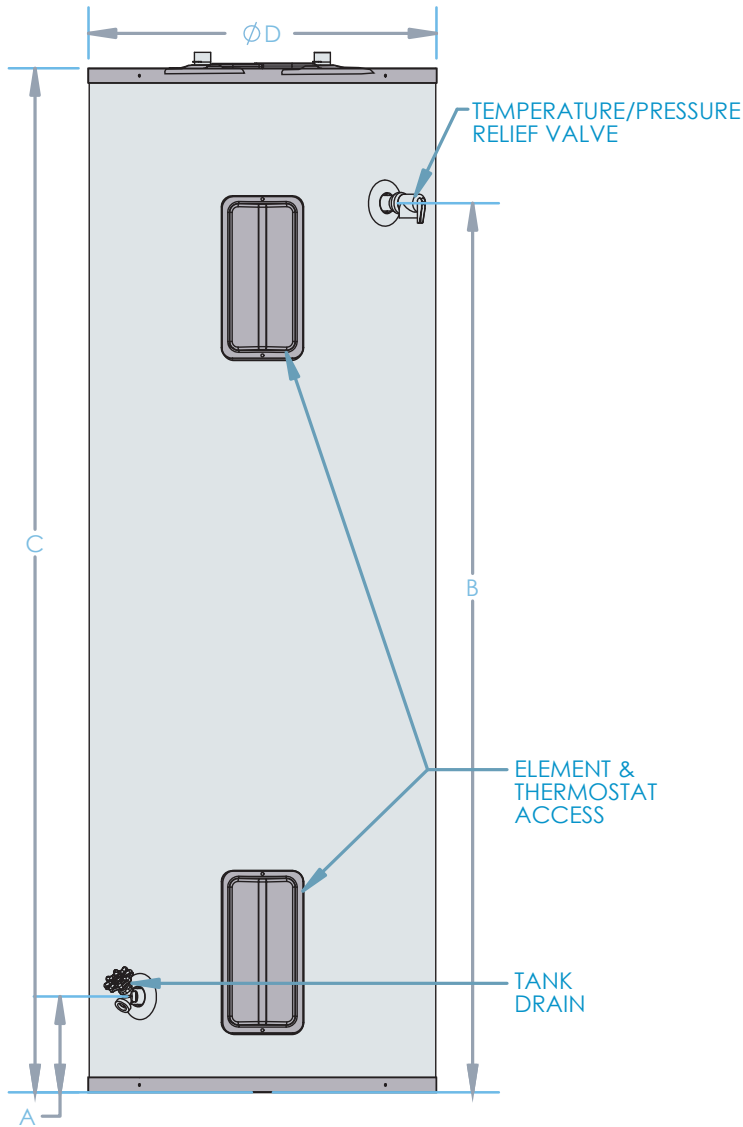
Top Competitor's Glass-lined Tank
Very Heavy

Minimizes Scale Build Up
Prolongs Tank Life
No Need for Anode Rods
Lightweight Construction

NO Anode Rods Needed!

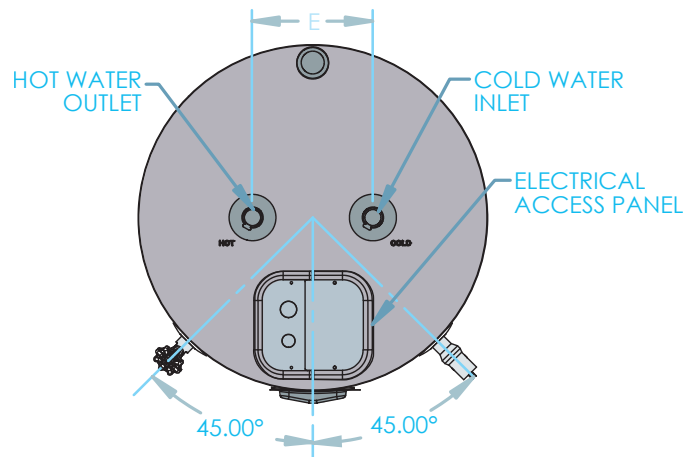
All coated tanks require anodes to delay the inevitable corrosion and tank failure. The average residential water heater lasts about 13 years. The Everlast stainless steel tank will outlast any coated steel tank in the market.





Specifications

The Inlet & Outlet have Built in Heat Traps, Keeping the Heat in the Tank for Greater Efficiency



SPECIFICATIONS AND DIMENSIONS								WATER TEMPERATURE RATINGS		
Models	Nominal Gallon	DOE Rated Storage Vol. (Gal)	A	B	C	D	E	Minimum Delivered Temp.	Maximum Delivered Temp.	High Temp. Limit
EVR040C2X045*	40	39	5.75"	46"	54.25"	19.5"	8"	110°F 43.3°C	150°F 65.5°C	170°F 76.6°C
EVR040C2X055*										
EVR052C2X045*	52	48	5.75"	58.25"	66.75"	19.5"	8"			
EVR052C2X055*										

Residential Models	Wattage	Voltage	Safety Listing	First Hour Bin	AHRI CERTIFIED® www.ahridirectory.org		Recovery Efficiency	Recovery @ 90° F Rise	Shipping Weight
					First Hour Rating	UEF			
EVR040C2X045*	4500	240	UL174	Medium	56 Gallons	.94	98%	20 Gallons	104 lbs
EVR040C2X055*	5500				56 Gallons			25 Gallons	
EVR052C2X045*	4500	240		Medium	62 Gallons	.93	98%	20 Gallons	118 lbs
EVR052C2X055*	5500				62 Gallons			25 Gallons	

*Add a "N08" or a "N12" to the end of the model number for 8 and 12 year warranty options.

Energy Factor based on D.O.E. (Department of Energy) test procedures. Heaters furnished with standard 240 volt AC, single phase non-simultaneous wiring.

www.htproducts.com • 272 Duchaine Blvd, New Bedford, MA • © Ariston Thermo USA LLC. 12/17/20 • MKTLIT-59

In accordance with our company policy of ongoing product improvement, HTP reserves the right to make changes without prior notice.