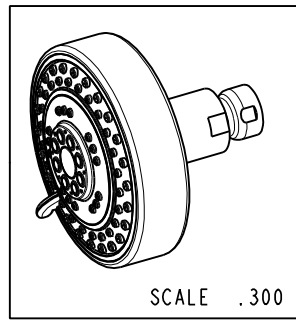
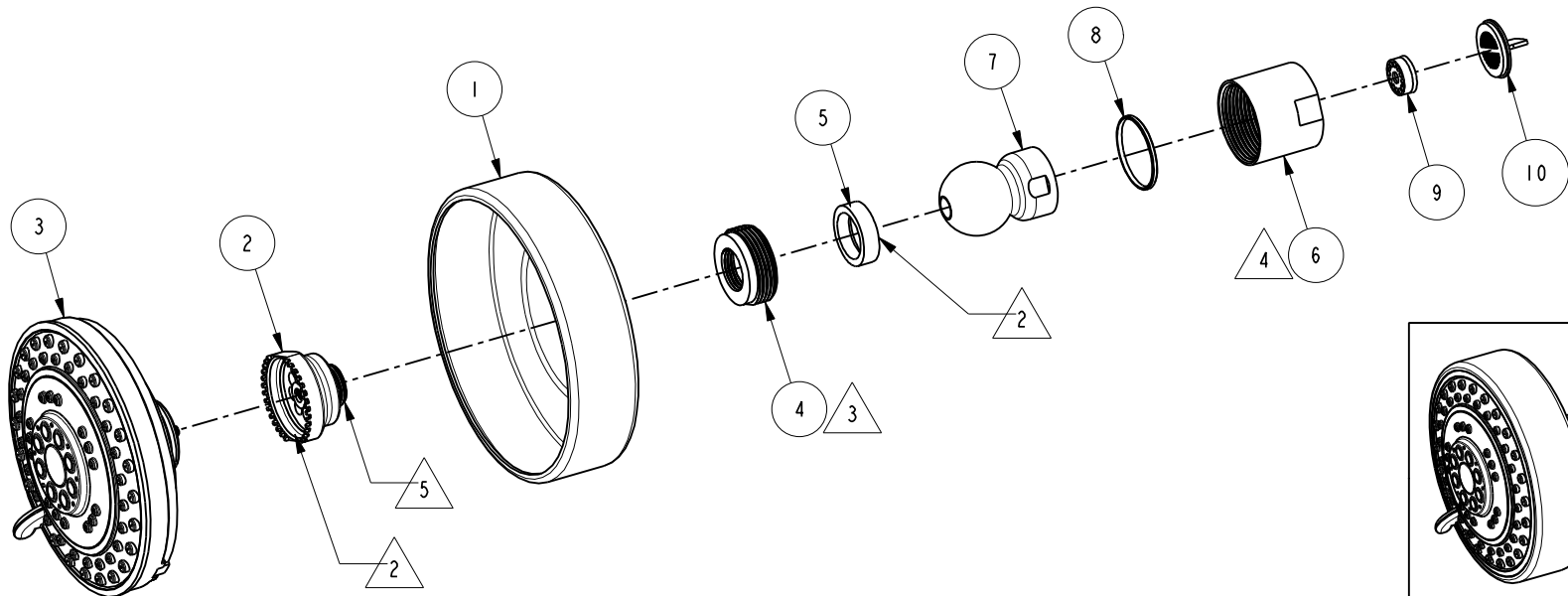


NOTES:

- (NI) 1. FIT / FORM / FUNCTION SHALL FOLLOW PS-E.008.
- 2 APPLY THIN FILM OF DOW CORNING III.
- 3 APPLY 35-40 LB-IN OF TORQUE.
- 4 APPLY 25-28 LB-IN OF TORQUE.
- 5 APPLY ADHENSIVE LOCTITE 680.

BILL OF MATERIAL (CURRENT LEVEL)

ITEM	PT/ASSY	DESCRIPTION	TYPE	QTY.
1	11375	SHOWER HEAD SHELL	PART	1
2	50784	SHOWER HEAD ADAPTER	PART	1
3	8-083	SHOWER ENGINE	PART	1
4	12112	SHOWER HEAD COLLAR ADAPTER	PART	1
5	91389	WSHR, .630 ID X .823 OD X .228 THK, CONCAVE, RUBBER	PART	1
6	12113	SHOWER HEAD COLLAR NUT	PART	1
7	80018	PIVOT BALL	PART	1
8	91157	WSHR, .920 ID X 1.0 OD X .066 THK, FLT, NYLON	PART	1
9	12833	FLOW REGULATOR, 1.8 GPM MAX	PART	1
10	50187	WSHR RBR W/ DIFFUSER	PART	1



TESTING	-	-	-
ASSEMBLY	-	-	-
PLATING	-	-	-
POLISHING	-	NEXT ASSY	USED ON
MACHINING	-	APPLICATION	
TOOLING FIXTURE #		REMOVE ALL BURRS AND SHARP EDGES	

UNITS ARE: INCHES [MM]
 TOLERANCES ARE:
 FRACTIONS DECIMALS ANGLES
 $\pm 1/16"$ $.X \pm .1$ [2.5] $\pm 1^\circ$
 $.XX \pm .06$ [1.5]
 (X.XXX) DENOTES CRITICAL DIMS.
 ALL THREADS ARE CRITICAL
 DRAWN JINSON 12/30/17
 CHECKED C.G. 12/30/17
 APPROVED C.G. 12/30/17

BRASSTECH 2001 CARNEGIE AVE.
 INCORPORATED SANTA ANA, CA 92705
 (949) 417-5207

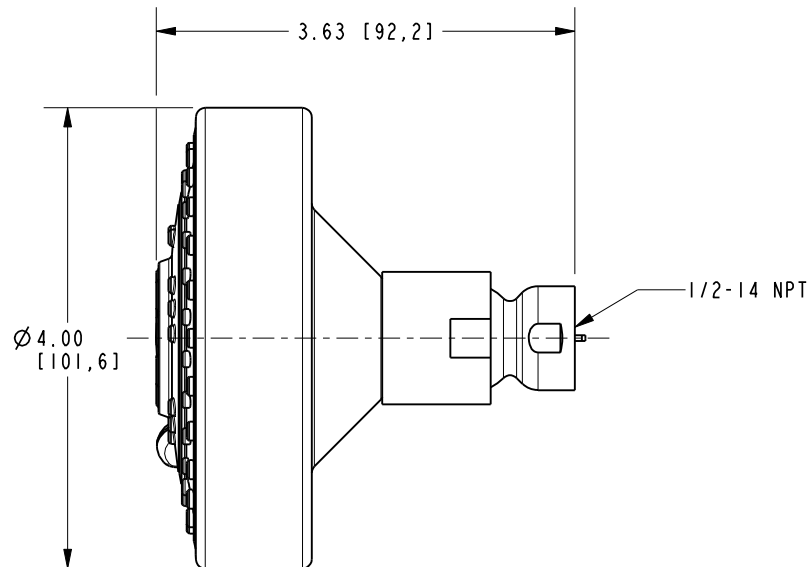
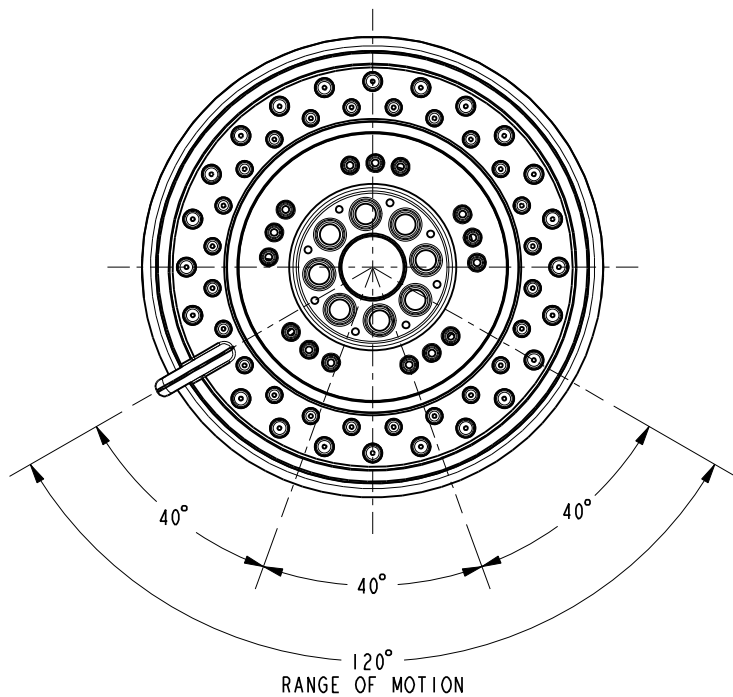
SHOWER HEAD, CONTEMP

DWG NO. 2155 REV B

SCALE .400 REF. - SHEET 1 OF 2

-	B	EN-3410	12/30/17	C.G.
-	A	EN-2473	03/06/13	-
-	-	EN-2332	12/10/12	-
ZONE	REV	DESCRIPTION	DATE	APPROVED

COPYRIGHT 2005 BRASSTECH, INC.
 THESE DRAWINGS AND THE DESIGNS
 DEPICTED HEREIN ARE THE PROPRIETARY
 PROPERTY OF BRASSTECH. ANY USE
 OR REPRODUCTION IS SUBJECT TO
 THE EXPRESS APPROVAL OF BRASSTECH.
 UNAUTHORIZED USE IS STRICTLY
 PROHIBITED. ALL RIGHTS RESERVED.



BRASSTECH		2001 E. CARNEGIE AVE.	
INCORPORATED		SANTA ANA, CA 92705	
DWG NO. 2155		REV B	
SCALE .600	REF. -	SHEET 2 OF 2	