

# UTR-H1808L Submittal

Header 96,500 to 193,000 (BTU/h)



Job Name: \_\_\_\_\_

Approval: \_\_\_\_\_

Location: \_\_\_\_\_

Date: \_\_\_\_\_

Engineer: \_\_\_\_\_

Construction: \_\_\_\_\_

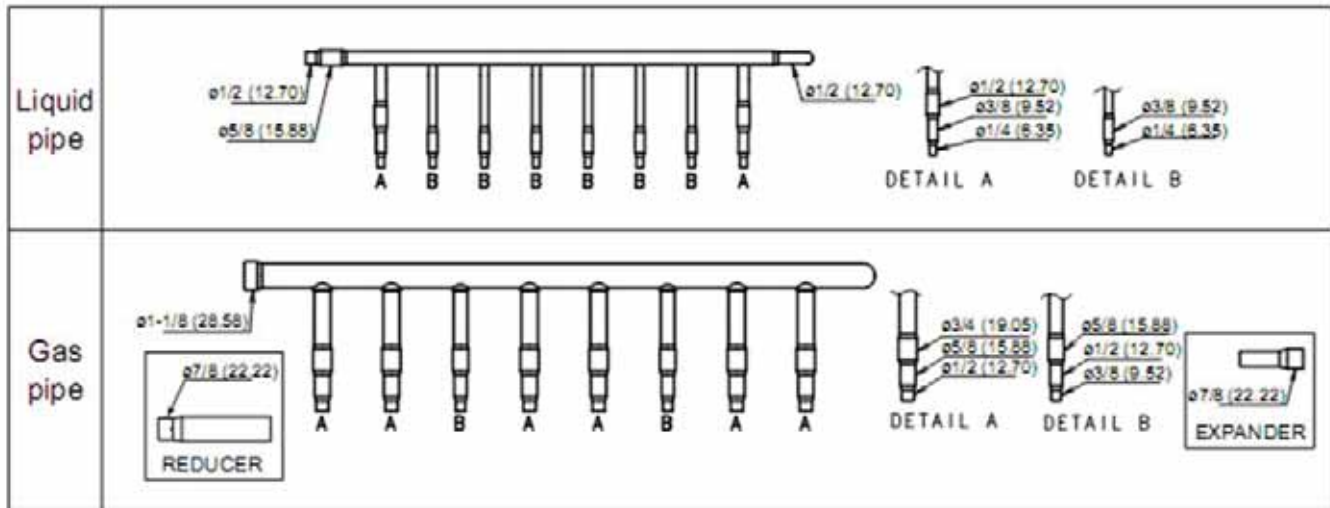
Submitted to: \_\_\_\_\_

Unit #: \_\_\_\_\_

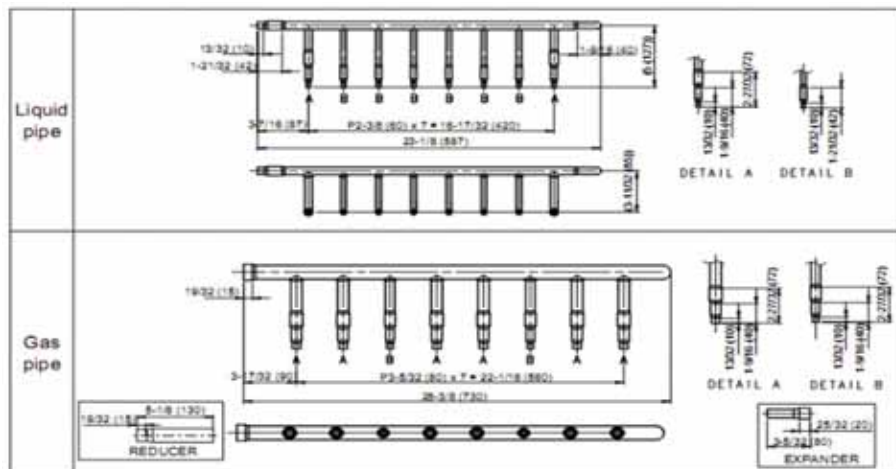
Submitted by: \_\_\_\_\_

Drawing #: \_\_\_\_\_

Reference: \_\_\_\_\_



Closed pipe A	Closed pipe B	Closed pipe C	Closed pipe insulation
<p>Qty 8</p>	<p>Qty 2</p>	<p>Qty 4</p>	<p>Qty 8</p>



Fujitsu General America, Inc.  
 Fairfield, NJ 07004  
 Toll Free: 1-888-888-3424  
 Fax: (973) 836-0447  
 Airstage.fujitsugeneral.com

Note: Specifications are based on the following conditions.  
 Cooling: Indoor temperature of 80°F (26.7°C) DB/67°F (19.4°C) WB, and outdoor temperature of 95.0°F (35°C) WB.  
 Heating: Indoor temperature of 70°F (21.1°C) DB/60°F (15.6°C) WB, and outdoor temperature of 47°F (8.3°C) DB/43°F (6.1°C) WB.  
 Pipe length: 25ft (7.5m). Height difference: 0ft (0m)/Outdoor unit—Indoor unit.  
 Built-in protective functions may limit capacity or shut off unit if unit is operated outside of unit design operating temperature ratings.

