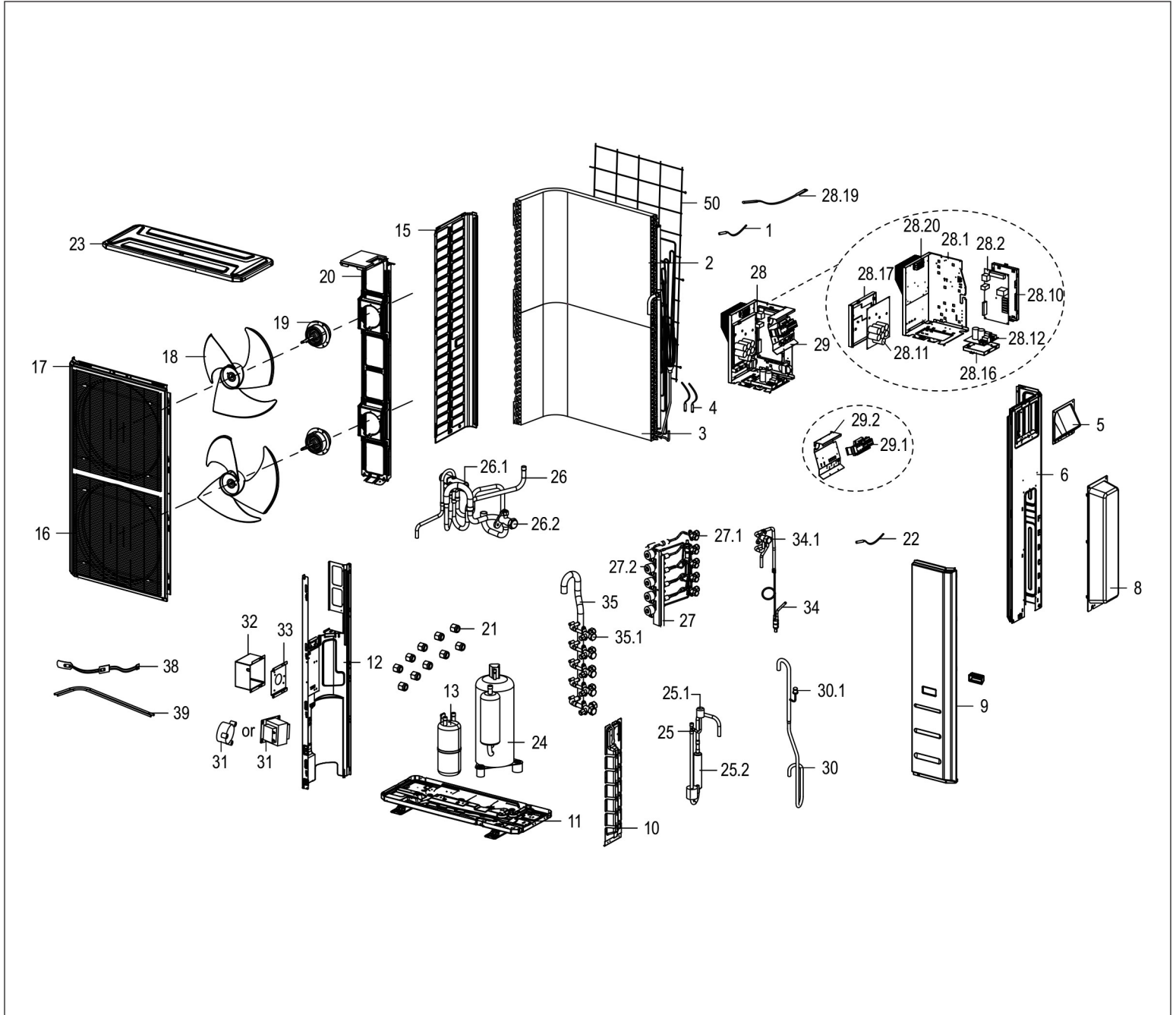


# Bosch Climate 5000 Series Multi Zone Outdoor Unit

## BMS500-AAM048-1CSXRA



Pos.	Description	Qty	BMS500-AAM048-1CSXRA	Recommended Stock	Remarks
1	Room temperature sensor	1.0	8-733-953-887	✓	
2	Condensing coil upper	1.0	8-733-953-888	✓	
3	Condensing coil lower	1.0	8-733-953-889	✓	
4	Pipe temperature sensor	1.0	8-733-953-890	✓	
4	Pipe temperature sensor	1.0	8-733-945-537	✓	
5	Big handle assembly	1.0	8-733-945-579		
6	Right panel	1.0	8-733-953-891		
8	Water collector	1.0	8-733-945-548	✓	
9	Front right clapboard assembly	1.0	8-733-945-562		
10	Valve plate	1.0	8-733-945-566		
11	Chassis assembly	1.0	8-733-945-565		
12	Partition board assembly	1.0	8-733-945-559		
13	Liquid-storage tank	1.0	8-733-945-615	✓	
15	Left side plate assembly of cabinet	1.0	8-733-945-574		
16	Air outlet grille	2.0	7-738-005-677	✓	
17	Front panel	1.0	8-733-945-569		
18	Axial flow fan	2.0	8-733-945-545	✓	
19	Brushless DC motor	2.0	8-733-945-529	✓	
20	Supporter subassembly of fan motor	1.0	8-733-945-563		
21	Copper nut	5.0	8-733-953-636		
21	Copper nut	3.0	8-733-953-586		
21	Copper nut	5.0	8-733-953-644		
22	Discharge temperature sensor	1.0	8-733-953-878	✓	
23	Top cover assembly	1.0	8-733-945-573		
24	DC inverter rotary compressor	1.0	8-733-945-533	✓	
25	Discharge pipe assembly	1.0	8-733-945-587	✓	
25.1	Pressure switch	1.0	8-733-945-644		
25.2	Muffler	1.0	8-733-945-614		
26	4-way valve assembly	1.0	8-733-945-593	✓	
26.1	4-way valve	1.0	8-733-945-611		
26.2	Gas valve	1.0	8-733-945-606		
27	Liquid valve assembly	1.0	8-733-945-592	✓	
27.1	Liquid valve	5.0	7-738-005-578		
27.2	Electronic expansion valve	5.0	8-733-945-609		
28	Electronic control box subassembly	1.0	8-733-953-892		
28.1	Installation plate of electric parts subassembly	1.0	8-733-945-564		
28.2	Outdoor main control board	1.0	8-733-953-893	✓	
28.10	Electronic installing box	1.0	8-733-945-549		
28.11	Inverter control board subassembly	1.0	8-733-945-622	✓	
28.12	Inverter module	1.0	8-733-953-894		
28.16	Electronic installing box	1.0	8-733-945-547		
28.17	Electronic installing box	1.0	8-733-945-550		
28.19	Compressor wire	1.0	8-733-953-895	✓	
28.20	Rectifier bridge	1.0	8-733-941-840		
29	Terminal board subassembly	1.0	8-733-945-637	✓	
29.1	Terminal	1.0	8-733-945-642		
29.1	Terminal	1.0	8-733-945-640		
29.1	Terminal	1.0	8-733-945-641		
29.2	Terminal board	1.0	8-733-945-581		
30	Suction pipe assembly	1.0	8-733-945-588	✓	
30.1	Pressure switch	1.0	8-733-945-643		
31	PFC inductor	1.0	8-733-945-541	✓	
32	Inductor box subassembly	1.0	8-733-945-560		
<b>BMS500-AAM048-1CSXRA</b>					

