

Job or Customer :	
Location :	
Engineer :	
<input type="checkbox"/> Complies with Spec <input type="checkbox"/> Alternate	Notes :
Contractor :	
HeatLink Rep :	
Submitted By :	Date :
Approved By :	Date :
P.O. Number :	Date :

Description

Press sleeve with view hole.

Technical Data

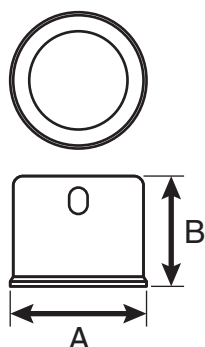
Material:..... Stainless Steel

Standards / Listings

ASTM F877
cNSFus-pw

Qty	Stk#	Size	Dimension		Weight
			A	B	
	24205	½"	0.71" (18.0 mm)	0.57" (14.5 mm)	5 g (0.17 oz)
	24222	¾"	0.96" (24.3 mm)	0.60" (15.2 mm)	7 g (0.24 oz)
	24228	1"	1.21" (30.7 mm)	0.74" (18.8 mm)	9 g (0.31 oz)
	24235	1-¼"	1.54" (39.1 mm)	0.93" (23.6 mm)	10 g (0.35 oz)
	24241	1-½"	1.70" (43.3 mm)	0.95" (24.2 mm)	22 g (0.78 oz)

Dimension Diagram



Installation

Installation must follow all of HeatLink's instructions and guidelines.

Related Documents

- HeatLink Limited Plumbing Warranty.