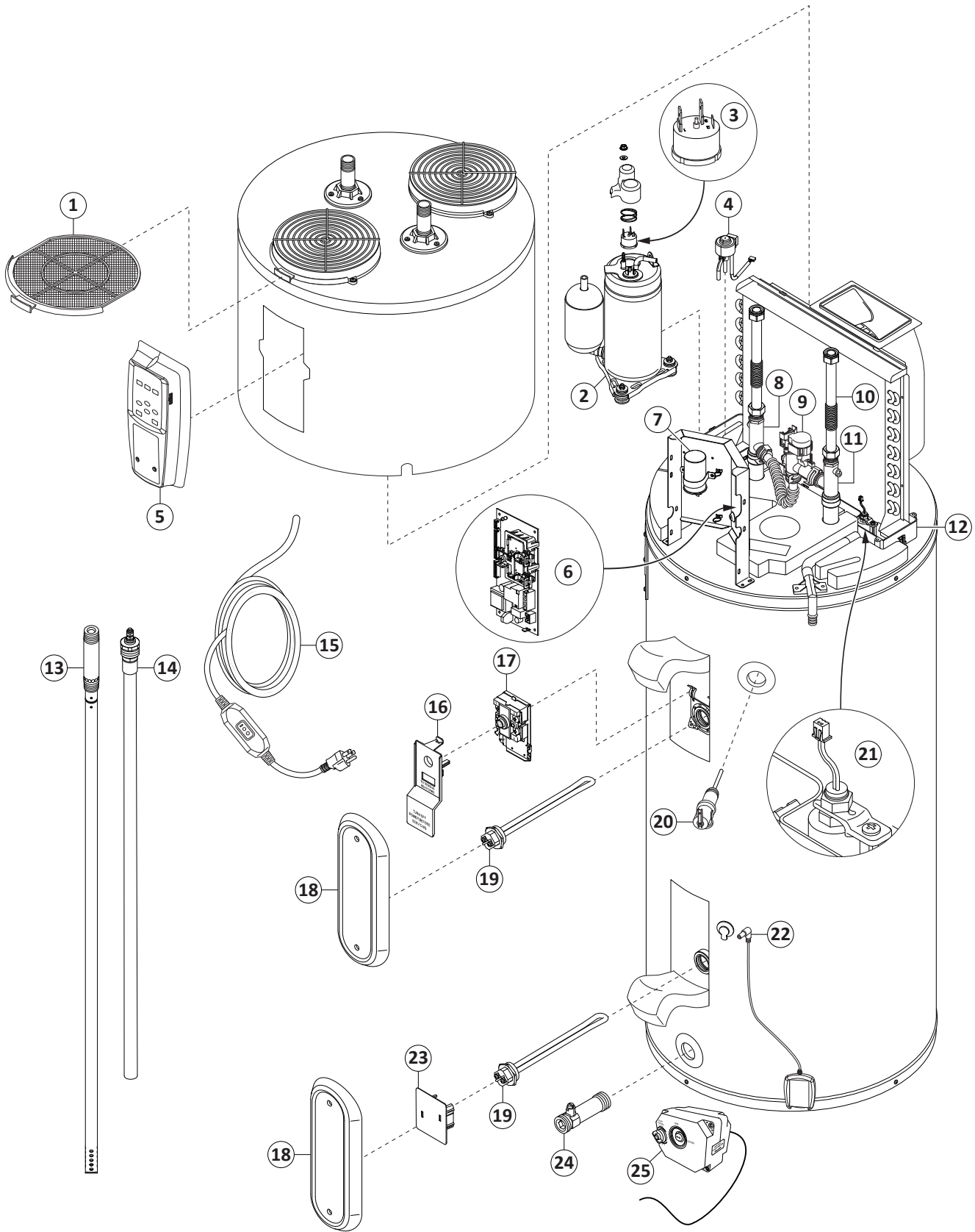


# REPAIR PARTS



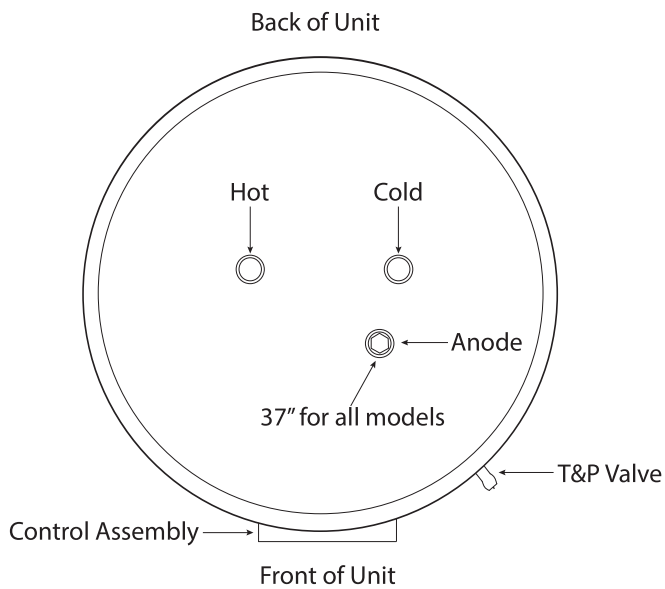
REPAIR PARTS

# REPAIR PARTS

## REPAIR PARTS

Repair parts may be ordered through your plumber, local distributor, home improvement center, or by calling our Technical Assistance Hotline which is listed on your warranty. When ordering parts, always give the following information:

1. Model, serial and product number
2. Item number
3. Parts description



ITEM NO.	PARTS DESCRIPTION
1	Air Filter
2	120V Compressor
3	120V Overload Protector
4	Electronic Expansion Valve Coil
5	Control Assembly
6	Control Board
7	120V Run Capacitor
8	Outlet T-Nipple Assembly
9	Smart Valve Assembly
10	Hoses (2x), Gaskets, for 40 gallon
	Hoses (2x), Gaskets, for 50/66/80 gallon
11	Inlet T-Nipple Assembly
12	Condensate Drain Pan for 40 gallon
	Condensate Drain Pan for 50/66/80 gallon
13	Dip Tube, for 40 & 50 gallon
	Dip Tube, for 66 gallon
	Dip Tube, for 80 gallon
14	Anode Rod, 37" for all models
15	120V Power Cord
16	Upper Element Personnel Protector
17	Energy Cut-Off (ECO) Switch
18	Element Access Panel
19	Element, 900 Watts
20	Temperature & Pressure Relief Valve
21	Condensate Float
22	Leak Detection Sensor
23	Lower Element Personnel Protector
24	Drain Valve
25	Automatic Cold Water Shut-Off Valve