



## H-x165 - Pro-Pal Dielectric Water Heater Supply Valves w/ Expansion Tank Service

### H-x165W Series

#### Pro-Pal Dielectric Water Heater Supply Valve

w/ Expansion Tank Service

Full Port DZR Brass Ball w/ Dielectric Union End

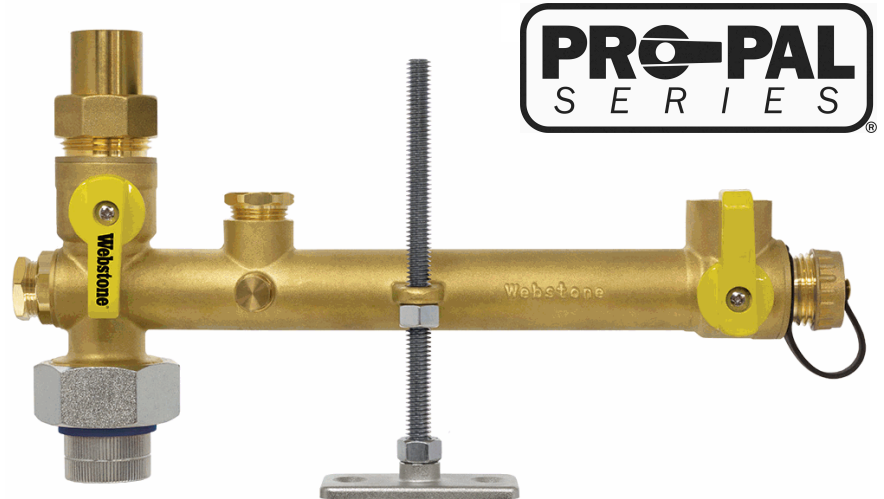
w/ 3/4 Expansion Tank Port & Hi-Flow Hose Drain

(3) Plugged FIP Ports (1/2", 1/2" & 1/8")

Includes Mounting Hardware

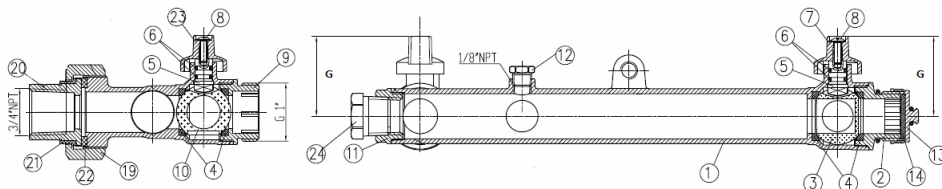
#### Certifications

Certified to NSF/ANSI/CAN 61 & 372



Size (in)	Item#	Weight (lbs)	CTN Qty	Case Qty	A	B	C	D	E	F	G	
<b>FIP Union x FIP x FIP x Hose</b>											<b>150 PSI CWP Max</b>	<b>180°F Max</b>
1/4" x 1/2" x 3/4" x 3/4	H-41652W	3.86	1	8	6.96	12.20	9.00	4.50	2.20	6	1.72	
3/4"	H-41653W	3.96	1	8	6.96	12.20	9.00	4.50	2.20	6	1.72	
<b>FIP Union x MIP x FIP x Hose</b>											<b>150 PSI CWP Max</b>	<b>180°F Max</b>
1/4" x 1/2" x 3/4" x 3/4	H-21652W	3.86	1	8	6.82	12.20	9.00	4.50	2.20	6	1.72	
3/4"	H-21653W	3.86	1	8	6.82	12.20	9.00	4.50	2.20	6	1.72	
<b>FIP Union x Press x FIP x Hose</b>											<b>150 PSI CWP Max</b>	<b>180°F Max</b>
1/4" x 1/2" x 3/4" x 3/4	H-81652W	3.89	1	8	7.72	12.20	9.00	4.50	2.20	6	1.72	
3/4"	H-81653W	3.95	1	8	7.72	12.20	9.00	4.50	2.20	6	1.72	
<b>FIP Union x Push x FIP x Hose</b>											<b>150 PSI CWP Max</b>	<b>180°F Max</b>
1/4" x 1/2" x 3/4" x 3/4	H-61652W	3.92	1	8	7.27	12.20	9.00	4.50	2.20	6	1.72	
3/4"	H-61653W	3.94	1	8	7.27	12.20	9.00	4.50	2.20	6	1.72	
<b>FIP Union x SWT x FIP x Hose</b>											<b>150 PSI CWP Max</b>	<b>180°F Max</b>
1/4" x 1/2" x 3/4" x 3/4	H-51652W	3.86	1	8	6.82	12.20	9.00	4.50	2.20	6	1.72	
3/4"	H-51653W	3.87	1	8	6.82	12.20	9.00	4.50	2.20	6	1.72	





NO.	DESCRIPTION	MATERIAL
1	Body	Lead-Free DZR Brass
2	Cap	Lead-Free DZR Brass
3	Ball	Stainless Steel
4	Seat	PTFE
5	Stem	Lead-Free DZR Brass
6	O-ring	EPDM
7	Handle	Aluminum
8	Screw	Stainless Steel
9	Cap	Lead-Free DZR Brass
10	Ball	Stainless Steel
11	Cap	Lead-Free DZR Brass
12	Plug	Lead-Free DZR Brass
13	Cap	Brass
14	Gasket	EPDM
15	Strap	TPE
16	Support Bracket	Steel CP
17	Thread Rod	Steel CP
18	Nut	Steel CP
19	Union Nut	Zinc Plated Steel
20	FIP Fitting	Zinc Plated Steel
21	Insulator Ring	PSU
22	Gasket	EPDM
23	Handle	Aluminum
24	Plug	Lead-Free DZR Brass

Specifications: Designed for use with water in residential or commercial plumbing systems. Threaded (NPT) ends comply with ANSI B1.20.1. Solder joint temperature ratings are per ASME B16.18 Annex A for 95-5 solder. Do not silver braze or overheat valves when soldering. Threaded ends comply with ANSI B1.20.7. Push ends suitable for use with copper, CPCV or PEX tubing and feature a fully removable grip assembly.

REV:9/24/2024

LEAD-FREE: Weighted average lead content ≤ 0.25%

WWW.WEBSTONEVALVES.COM



WARNING: Cancer and Reproductive Harm - www.P65Warnings.ca.gov