

FIG. 8100
strut nut
with regular
spring

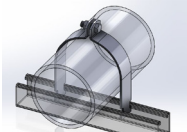


FIG. 8200
rigid IPS strut clamp
assembled

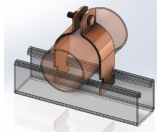


FIG. 8300CT / CTP
copper tubing strut
clamp, assembled -
copper epoxy (copper-
gard) / copper plated

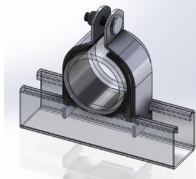


FIG. 8500
cushion strut clamp

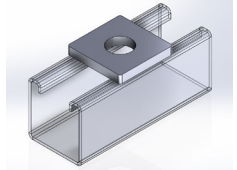


FIG. 9001FF
square strut washer
1-5/8 x 1-5/8

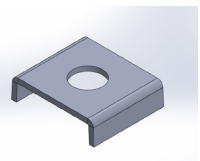


FIG. 9001UFF
u-saddle strut
washer
1-5/8 x 1-5/8

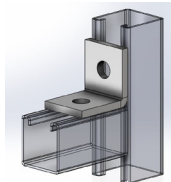


FIG. 9022CA
2-hole corner angle
1-7/8 x 2

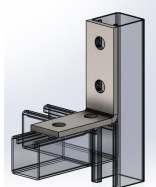


FIG. 9030CA
4-hole corner angle
3-1/2 x 4-1/8

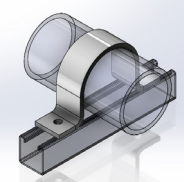


FIG. 9110HD
2-hole hold
down clamp

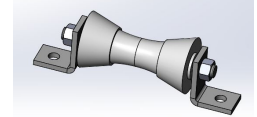


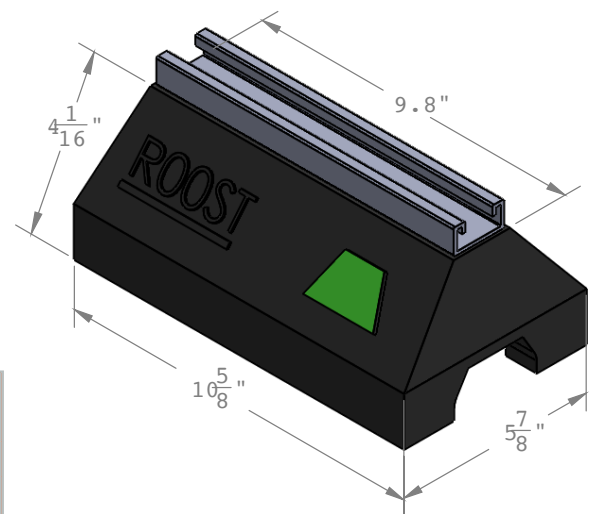
FIG. 9650
strut roller
support

7510-RT rooftop support block

7510-RT OVERVIEW:

Empire Industries' FIG. 7510RT7200Z is pre-assembled and readily available through our vast distributor network. It provides an easy to install rooftop support system for supporting natural gas and refrigeration piping systems, cable tray, electrical conduit, multiple lines, HVAC equipment and many other applications. The strut channel (7510RT7200Z) is pre-galvanized and offers greater resistance to corrosive environments.

The 100% recycled rubber base (7510RT) is UV resistant, suitable for installation on most types of roofing material or other flat surfaces and is compatible with all types of strut components. It is designed with a drainage channel to aid water flow and will not float.

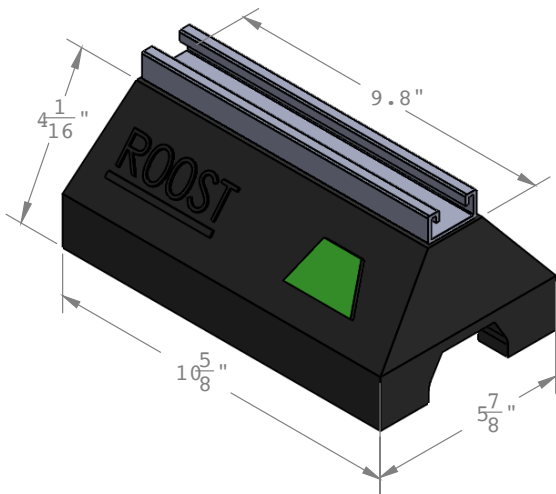
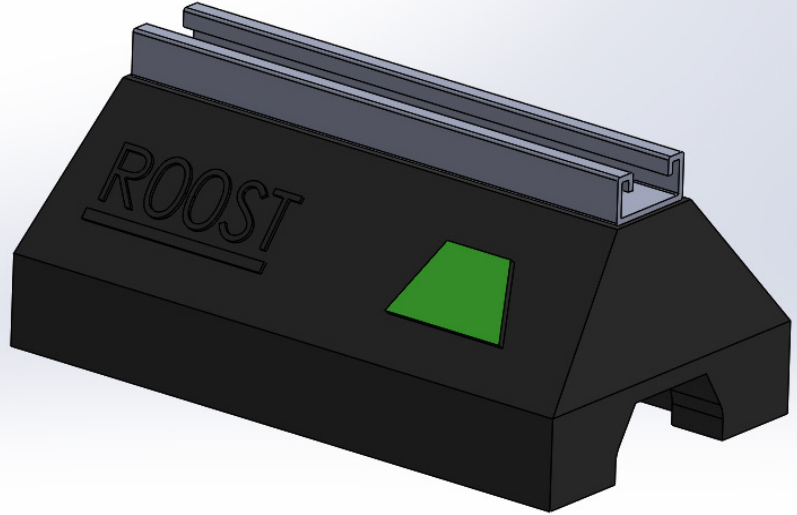


Materials/ Finishes:	100% Recycled Rubber Base with Pre-Galvanized Strut Channel (7510RT7200Z)
Variants:	100% Recycled Rubber Base Only (7510RT)
Weight (lbs):	6.00
Uniform Load Capacity (lbs):	500
Ordering:	Specify figure number.
Notes:	Uniform Load Capacity for the components in the 7510RT7200Z assembly only. Consult roofing manufacturer or engineer for roof loading compatibility.

7510-RT OVERVIEW:

Empire Industries' FIG. 7510RT7200Z is pre-assembled and readily available through our vast distributor network. It provides an easy to install rooftop support system for supporting natural gas and refrigeration piping systems, cable tray, electrical conduit, multiple lines, HVAC equipment and many other applications. The strut channel (7510RT7200Z) is pre-galvanized and offers greater resistance to corrosive environments.

The 100% recycled rubber base (7510RT) is UV resistant, suitable for installation on most types of roofing material or other flat surfaces and is compatible with all types of strut components. It is designed with a drainage channel to aid water flow and will not float.



Materials/ Finishes:	100% Recycled Rubber Base with Pre-Galvanized Strut Channel (7510RT7200Z)
Variants:	100% Recycled Rubber Base Only (7510RT)
Weight (lbs):	6.00
Uniform Load Capacity (lbs):	500
Ordering:	Specify figure number.
Notes:	Uniform Load Capacity for the components in the 7510RT7200Z assembly only. Consult roofing manufacturer or engineer for roof loading compatibility.