

# FlexFilter®

Patented

THE FLEXIBLE MEDIA FILTER  
THAT REPLACES ALL MAJOR BRANDS

- Replaces ALL major brands
- Installs in seconds
- Seven models
- MERV 11 media
- Compact
- Easy to store

REPLACES THE  
FOLLOWING  
FILTER SIZES

16" x 25" x 5"  
OR  
20" x 25" x 5"

Record installation date

Date installed:

DO NOT EXPOSE FILTER  
TO UV LIGHT.

For a solution:  
CALL 1-800-368-7263

**FlexFilter**  
MediaCleaner

16" x 25" or 20" x 25"

Model: Flex-2

**MERV 11**

AIR FLOW



FIELD CONTROLS

PUSH STRAPS HERE TO EXPAND TO 20" x 25"

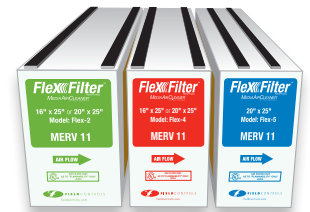


FIELD CONTROLS

# FlexFilter® Fits!

Introducing the patented FlexFilter® from Field Controls. Ultra compact, easy-to-assemble media air cleaners replace over 40 of the most popular models. With seven high efficiency MERV 11 models to choose from, stocking, storing, shipping, and installing media air cleaners just got a whole lot easier.

Just follow the handy color-coded selection guide below.

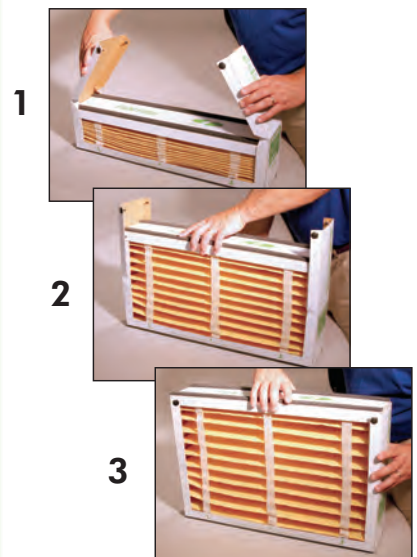


| FlexFilter® Replacement Guide |                                 |               |   |                        |          |
|-------------------------------|---------------------------------|---------------|---|------------------------|----------|
| BRAND                         | FILTER MODEL                    | SIZE (inches) | FITS AIR CLEANER MODEL  | REPLACEMENT FLEX MODEL | PART NO. |
| Field Controls®               | FCRM11-2020                     | 20 x 20 x 5   | FC11-2020   | FLEX-1                 | 46600407 |
|                               | FCRM11-1625                     | 16 x 25 x 5   | FC8-1625 / FC11-1625  | FLEX-2                 | 46600401 |
|                               | FCRM11-2025                     | 20 x 25 x 5   | FC8-2025 / FC11-2025<br>FCRA11-2025   |                        |          |
| Skuttle®                      | 000-0448-007 (003)              | 20 x 20 x 5   | DB-20-20  | FLEX-1                 | 46600407 |
|                               | 000-0448-008 (004)              | 16 x 20 x 5   | DB-20-16  | FLEX-2                 | 46600401 |
|                               | 000-0448-005 (001)              | 16 x 25 x 5   | DB-25-16  |                        |          |
|                               | 000-0448-006 (002)              | 20 x 25 x 5   | DB-25-20  |                        |          |
| GeneralAire®                  | 5FM2020 (4531)                  | 20 x 20 x 5   | MAC2020 / MAC2020M  | FLEX-1                 | 46600407 |
|                               | 5FM1625 (4511)                  | 16 x 25 x 5   | MAC1400 / MAC1400M  | FLEX-2                 | 46600401 |
|                               | 5FM2025 (4501)                  | 20 x 25 x 5   | MAC2000 / MAC2000M<br>MAC-L   |                        |          |
| Trion®                        | 255649-103 /<br>259112-113      | 20 x 20 x 5   | 455602-225 / 455602-725   | FLEX-1                 | 46600407 |
|                               | 255649-105 /<br>259112-105      | 16 x 25 x 5   | 455602-125 / 455602-625   | FLEX-2                 | 46600401 |
|                               | 255649-102 /<br>259112-102      | 20 x 25 x 5   | 455602-025 / 455602-525<br>266380-010 / 266380-510<br>447380-010 / 477380-510 |                        |          |
| Ultravation®                  | 91-013                          | 20 x 20 x 5   | 90-116  | FLEX-1                 | 46600407 |
|                               | 91-012                          | 16 x 20 x 5   | 90-115  | FLEX-2                 | 46600401 |
|                               | 91-005                          | 16 x 25 x 5   | 90-106  |                        |          |
|                               | 91-006                          | 20 x 25 x 5   | 90-107  |                        |          |
| 90-064 / 90-027               |                                 |               |   |                        |          |
| Honeywell®                    | POPUP1620                       | 16 x 20 x 4   | F100F2028 / F200E1003   | FLEX-3                 | 46600406 |
|                               | FC100A1003                      | 16 x 20 x 4   | F100F2028   |                        |          |
|                               | FC200E1003                      | 16 x 20 x 4   | F200E1003   |                        |          |
|                               | POPUP2020                       | 20 x 20 x 4   | F100F2036 / F200E1029   |                        |          |
|                               | FC100A1011                      | 20 x 20 x 4   | F100F2036   |                        |          |
|                               | FC200E1011                      | 20 x 20 x 4   | F200E1029   | FLEX-4                 | 46600405 |
|                               | POPUP1625                       | 16 x 25 x 4   | F100F2002 / F200E1011   |                        |          |
|                               | FC100A1029                      | 16 x 25 x 4   | F100F2002   |                        |          |
|                               | FC200E1029                      | 16 x 25 x 4   | F200E1011   |                        |          |
|                               | POPUP2025                       | 20 x 25 x 4   | F100F2010 / F200E1037   |                        |          |
| FC100A1037                    | 20 x 25 x 4                     | F100F2010     | FLEX-4  | 46600405               |          |
| FC200E1037                    | 20 x 25 x 4                     | F200E1037     |   |                        |          |
| Carrier®<br>Bryant®           | EXPXXFIL0016                    | 16 x 25 x 4   | EZXCAB1016  | FLEX-4                 | 46600405 |
|                               | EXPXXFIL0316                    | 20 x 25 x 4   | EZXCAB1020  |                        |          |
|                               | EXPXXFIL0020                    |               |   |                        |          |
|                               | EXPXXFIL0320                    |               |   |                        |          |
| Aprilaire®                    | 201<br>210 + 1213<br>213 + 1213 | 20 x 25 x 4   | 2200  | FLEX-5                 | 46600402 |
|                               | 210                             |               | 1210, 2210, 3210, 4300  |                        |          |
|                               | 213                             |               | 1210, 2210, 3210, 4300  |                        |          |
|                               | 310<br>313                      | 19 x 20 x 4   | 1310, 2310, 3310, 4300  | FLEX-6                 | 46600403 |
|                               | 310<br>313                      |               | 1310, 2310, 3310, 4300  |                        |          |
|                               | 401<br>410 + 1413<br>413 + 1413 | 16 x 28 x 4   | 2400  | FLEX-7                 | 46600404 |
|                               | 410                             |               | 1410, 2410, 3410, 4400  |                        |          |
| 413                           | 1410, 2410, 3410, 4400          |               |   |                        |          |
| 413                           | 1410, 2410, 3410, 4400          |               |   |                        |          |

**Plastic Buttons**  
Snap into place quickly and easily

**MERV 11 Media**  
High efficiency with minimal pressure drop

## Installs in Seconds



**FIELD CONTROLS**

fieldcontrols.com