

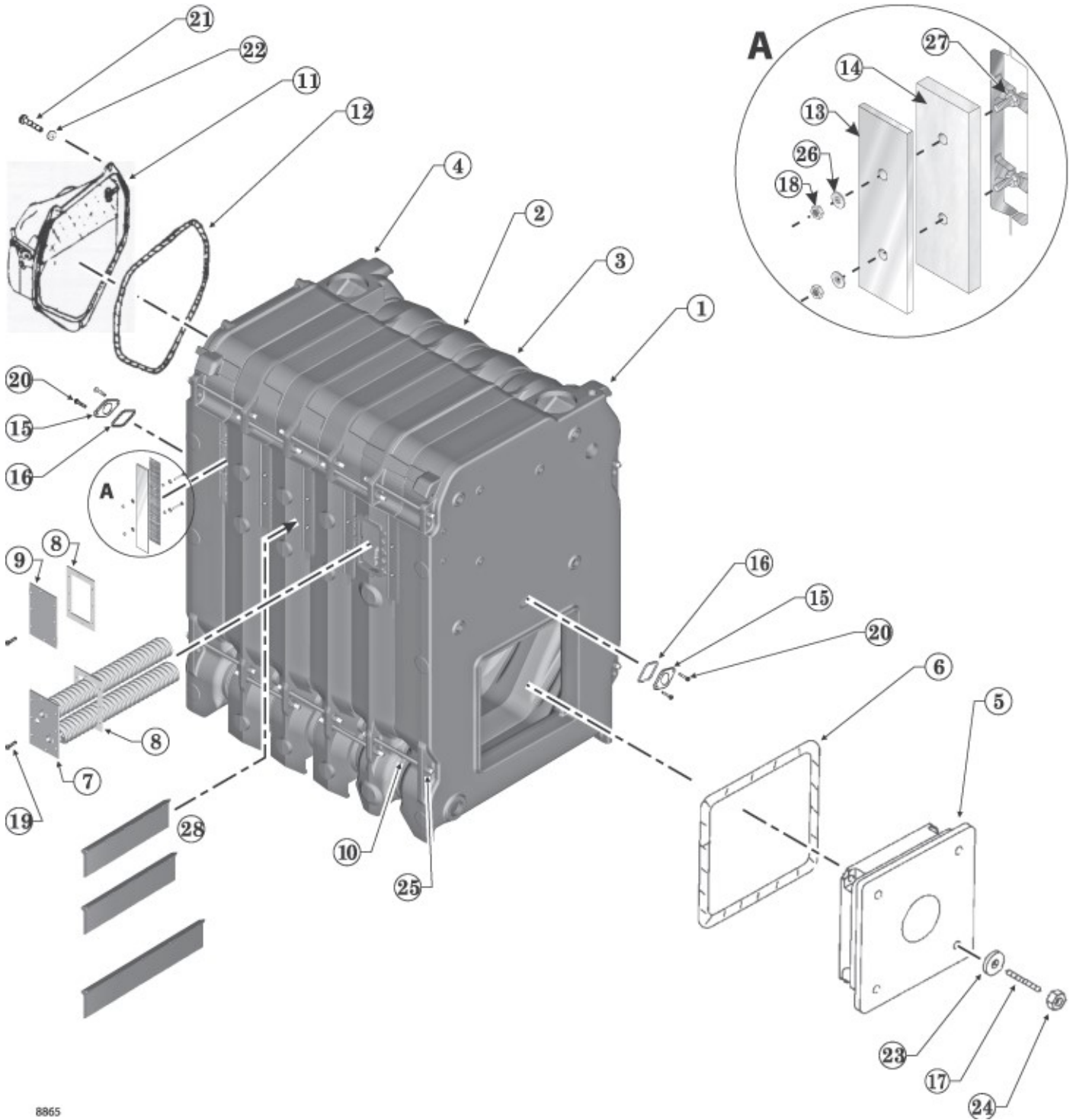


# Parts

Item	Description	Part number
1	Front sections (8823)	316-301-210
2	Regular intermediate section (8825)	316-301-212
3	Tankless intermediate section (8826)	316-301-214
4	Back section (8828)	316-301-211
—	Supply intermediate section (8824) (not shown)	316-301-213
—	Section replacement kit (includes rope seals, rope adhesive and sealant for one joint)	386-300-213
5	Burner mounting plate	Order for specific burner
6	Sealing rope — ½" (7 feet per burner plate)	590-735-140
7	Tankless heater, when used, number 820	590-291-909
8	Heater gasket	590-317-579
9	Heater cover plate	450-030-934
10	Draw rod 5/8"-11UNC-2A x 13" (apply to front and rear sections)	560-134-505
11	Draft hood collar assembly (includes damper collar, damper, damper quadrant, locking plate, swivel, brackets and rope) a. 10-inch — 488 through 688 . . . . . b. 12-inch — 788 and 888 . . . . . c. 14-inch — 988 through 1388 . . . . . d. 16-inch — 1488 through 1688 . . . . . e. 18-inch — 1788 and 1888 . . . . . f. Quadrant for flue collar . . . . . g. Damper blade . . . . . h. Damper locking plate . . . . .	340-004-606 340-004-607 340-004-608 340-004-609 340-004-612 330-056-634 460-003-646 563-530-784
12	Sealing rope ½" (6 feet for flue collar)	590-735-140
13	Clean out plate	450-030-965
14	Woven fiberglass gasket for clean out plate	590-317-305
15	Observation port assembly (includes frame, rope, gasket, plugs and sight glass) (2 per boiler) a. Assembly . . . . . b. Sight glass only . . . . . c. Washer gasket for sight glass (2½ x 1¼ x ⅛ inches) . . . . .	385-600-099 591-419-199 590-317-580
16	Sealing rope, ⅜" (1 foot per observation port)	590-317-150
17	Burner mounting plate studs (½ x 3½ inches)	Obtain locally
18	Clean out plate nut, ¼"	Obtain locally
19	Cap screw, ½-13 x ¾"	Obtain locally
20	Observation port screw, 10-32 x 1½"	Obtain locally
21	Flue collar cap screw, ½" x 1½"	Obtain locally
22	Flue collar washer, 1¼"	Obtain locally
23	Burner mounting plate washer, ½"	Obtain locally
24	Burner mounting plate nut, ½"	Obtain locally
25	Draw rod nut, ⅝"	Obtain locally
26	Clean out plate washer, ¼"	Obtain locally
27	Clean out plate carriage bolt, ¼" x 1¼"	Obtain locally
28	HXT-bars (see Figure 13, page 13, for installation and placement details for HXT-bars) d. 3-flueway kit (includes 3 sets of bars) e. 2-flueway kit (includes 2 sets of bars)	416-400-130 416-400-131
Not shown	Combustion chamber liner kit (optional) — includes ceramic fiber blanket for left side wall plus water glass adhesive — see page 33. Consult your local Weil-McLain sales office for details.	Contact local Weil-McLain sales office

# Parts *(continued)*

Figure 53 Parts



8865