

Inverter Driven Heat Pump

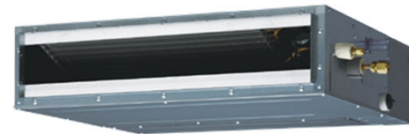
7,000 BTU Slim Duct Type

Job Name _____
 Location _____
 Engineer _____
 Submitted To _____
 Submitted By _____
 Reference _____

Date _____
 Approval _____
 Construction _____
 Unit No _____
 Drawing No _____

PRODUCT FEATURES

- Wired remote controller
- Remote temperature sensor Compatible
- Auto|Cool|Dry|Fan|Heat modes
- Weekly|24 Hr. timer
- Powerful mode
- Cold prevention
- Auto Restart



MODEL NUMBERS				
Indoor Unit			ARU7RLF	
Nominal Capacity			7,000	
LINESET REQUIREMENTS				
Connection Method			Flare	
Liquid	in (mm)		Ø1/4 (Ø6.35)	
Gas			Ø3/8 (Ø9.52)	
Drain hose	Material		Hard PVC	
	in		Ø 3/4 (I.D.), Ø 1-1/16 (O.D.)	
	mm		Ø 20.7 (I.D.), Ø 26.6 (O.D.)	
INDOOR DIMENSIONS & WEIGHT				
Net (H x W x D)	in		7-13/16 x 27-9/16 x 24-7/16	
	mm		198 x 700 x 620	
Gross (H x W x D)	in		10-13/16 x 37-3/16 x 30-3/8	
	mm		274 x 945 x 772	
Net Weight	lb (kg)		37 (17)	
Gross Weight			49 (22)	
ELECTRICAL SPECIFICATIONS				
Voltage/Frequency/Phase			208/230 V ~ 60 Hz	
Voltage Range			187-264 V	
Running Current	A		0.3	
Input Power	W		33	
SOUND PRESSURE				
Indoor Unit	Cooling	High	dB (A)	28
		Medium		26
		Low		25
		Quiet		24
	Heating	High	dB (A)	28
		Medium		26
		Low		25
		Quiet		24
FAN DATA				
Airflow Rate	Cooling	High	CFM (m3/h)	324 (550)
		Medium		288 (490)
		Low		277 (470)
		Quiet		259 (440)
	Heating	High	CFM (m3/h)	324 (550)
		Medium		288 (490)
		Low		277 (470)
		Quiet		259 (440)
Static Pressure	inWG (Pa)			0 to 0.36 (0 to 90)

Warranty Information



7 Year Compressor, 5 Year Parts out-of-the-box Warranty



10 Year Compressor, 10 Year Parts Warranty when registered within 30 days of installation in a residence



12 Year Compressor, 12 Year Parts Warranty when registered within 30 days of installation in a residence, and installed by a Fujitsu Elite contractor

ENCLOSURE

Enclosure	Material	Galvanized steel sheet
	Color	-

ACCESSORIES

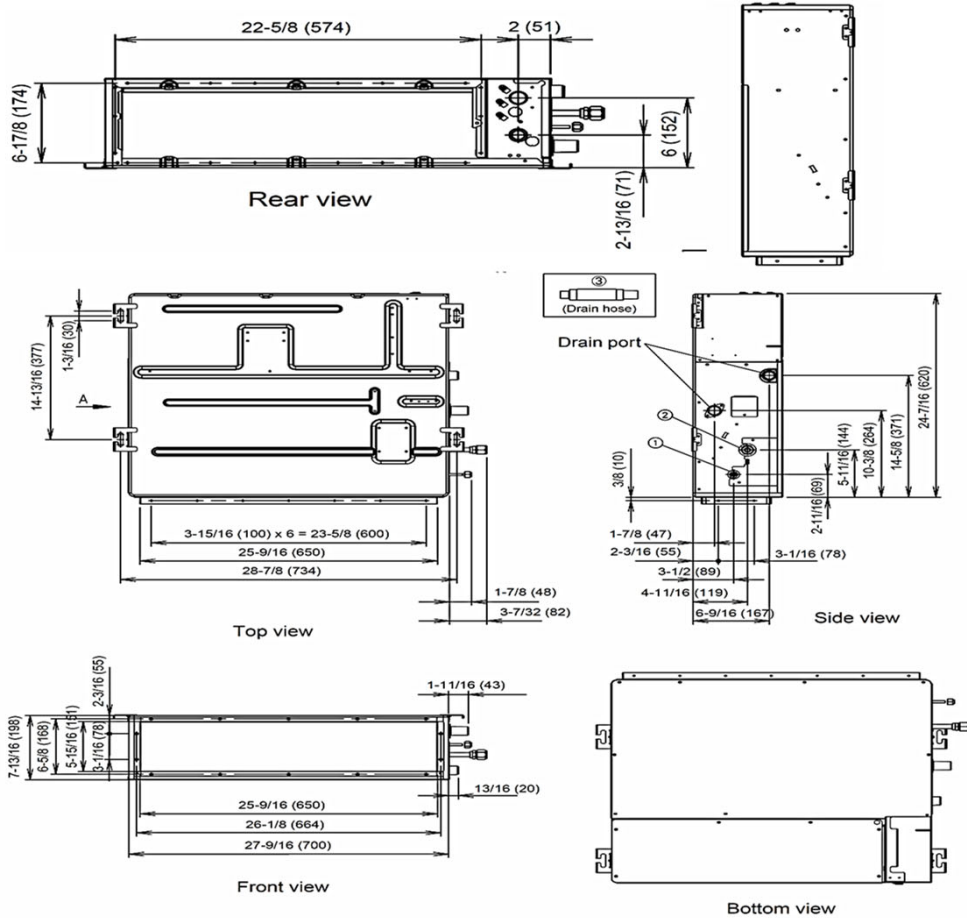
UTY-TTRX	3rd Party Thermostat Converter
UTD-ECS5A	Slim Duct Connector Kit
UTY-LRHUM	Wireless Remote Receiver Kit
UTY-RVNUM	Wired Remote w/backlight
UTY-RSNUM	Simple Remote
UTY-XSZX	Remote Sensor
FJ-RC-WIFI-1NA	Intesis Wired WiFi module
FJ-IR-WIFI-1NA	Intesis IR WiFi module
UTY-TFNXZ2	WiFi interface Module
UTD-GXSB-W	Auto Louver Grill Kit



ETL#: 3170288

Due to continuous product improvements, specifications are subject to change without notice. Please log in to the Fujitsu Portal for the most up-to-date documentation <https://portal.fujitsugeneral.com>

Effective Date: 9/18/2019 Version ARU7RLF -2019B



The Fujitsu logo is a worldwide trademark of Fujitsu General Limited. The Halcyon logo and name is a worldwide trademark of Fujitsu General Limited and is a registered trademark in Japan, the USA and other countries or areas. Copyright 2018 Fujitsu General America, Inc. Fujitsu's products are subject to continuous improvements. Fujitsu reserves the right to modify product design, specifications and information in this brochure without notice and without incurring any obligations.

Note: Specifications are based on the following conditions:
 Cooling: Indoor temperature of 80°F (26.7°C) DB/67°F (19.4°C) WB, and outdoor temperature of 95°F (35°C) DB/75°F (23.9°C) WB. Heating: Indoor temperature of 70°F (21.1°C) DB/60°F (15.6°C) WB, and outdoor temperature of 47°F (8.3°C) DB/43°F (6.1°C) WB. Pipe length: 25ft. (7.5m), Height difference: 0ft. (0m) (Outdoor unit - indoor unit).