



33 Series No-Kink Hose Bibbs



33 Series No-Kink Hose Bibbs

FEATURES

- Cast red brass construction to prevent dezincification
- Solid brass operating stem
- Large unobstructed waterways for greater flow rates
- Cast metal handle assembly with brass mounting screw
- Green standard handle with red or blue options
- Packing nut design for years of reliable life
- EPDM smooth turn packing
- FPT, MPT, and SWT inlet connections
- 3/4" garden hose connection outlet
- Solid brass fast-travel stem with ACME threads
- Each valve individually tested
- Angle of valve prevents kinks in hose

ORDERING

33.40-

Inlet

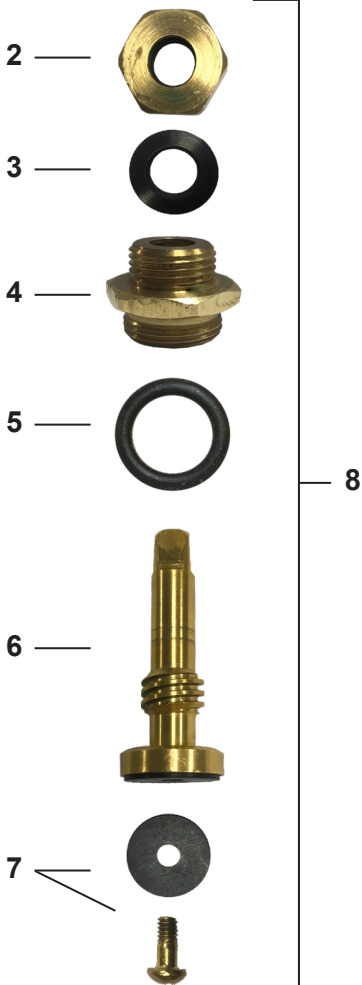
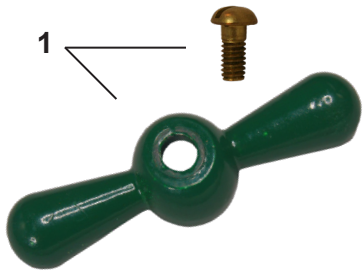
- 40- 1/2" FPT
- 42- 1/2" MPT x 1/2" SWT
- 43- 1/2" COMP
- 60- 3/4" FPT
- 62- 3/4" MPT
- 67- 1/2" SWT x 3/4" SWT

Handle Option

- None- Green
- B- Blue
- R- Red



33 SERIES REPLACEMENT PARTS



ID	Part No.	Description
1	630-0046	Handle and Screw Kit
2	310-3024	Packing Nut
3	336-3006	Packing Only
4	310-3017	Valve Stem Cap
5	936-3003	O-Ring
6	310-3019	Stem Body
7	630-0047	Bibb Washer and Screw Kit
8	231-3101	Stem Assembly Complete
	630-0044	Service Kit for Hose Bibbs, Contains: 1, 3, 7

