

**Inverter Driven Heat Pump**

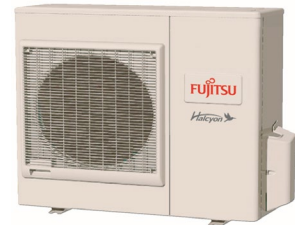
**Inverter Driven Heat Pump**

Job Name \_\_\_\_\_  
 Location \_\_\_\_\_  
 Engineer \_\_\_\_\_  
 Submitted To \_\_\_\_\_  
 Submitted By \_\_\_\_\_  
 Reference \_\_\_\_\_

Date \_\_\_\_\_  
 Approval \_\_\_\_\_  
 Construction \_\_\_\_\_  
 Unit No \_\_\_\_\_  
 Drawing No \_\_\_\_\_

**PRODUCT FEATURES**

- Auto Changeover
- 24 Hour Timer
- Auto Louver: 4 way
- Minimum Heat Mode
- Quiet Mode
- Auto Restart
- Economy Mode
- Auto Fan



**MODEL NUMBERS**

Indoor Unit	ASU30RLXB
Outdoor Unit	AOU30RLXB
System	30RLXB

**EFFICIENCIES**

SEER	16.5	
EER	9.5	
HSPF	9	
COP	kW/kW	3.14
	Btu/hW	10.7

**OUTDOOR TEMPERATURE OPERATION RANGE**

Cooling	*F(°C)	14 to 115 (-10 to 46)
Heating		5 to 75 (-15 to 24)

**CAPACITIES**

Cooling	Rated	BTU/hW	30,000
	Min.-Max.		9900-32400
Heating	Rated		30,000
	Min.-Max.		8000 - 33000

**LINESET REQUIREMENTS**

Connection Method		Flare
Liquid	in (mm)	Ø 3/8 (Ø 9.52)
		Ø 5/8 (Ø 15.88)
Pre-Charge Length	ft (m)	49 (15)
Minimum Length		10 (3)
Maximum Length		164 (50)
Max. Height Diff.		49 (15)

**INDOOR DIMENSIONS & WEIGHT**

Net (H x W x D)	in	320 x 998 x 228
	mm	12-10/16 x 39-5/16 x 9
Gross (H x W x D)	in	319 x 1090 x 429
	mm	12-9/16 x 42-15/16 x 16-14/16
Net Weight	lb (kg)	31 (14)
Gross Weight		40 (18)

**OUTDOOR DIMENSIONS & WEIGHT**

Net (H x W x D)	in	32-11/16 x 35-7/16 x 13
	mm	830 xx 900 x 330
Gross (H x W x D)	in	38-3/16 x 41-5/16 x 17-8/16
	mm	970 x 1050 x 445
Net Weight	lb (kg)	134 (61)
Gross Weight		150 (68)

**Warranty Information**



7 Year Compressor, 5 Year Parts out-of-the-box Warranty



10 Year Compressor, 10 Year Parts Warranty when registered within 30 days of installation in a residence



12 Year Compressor, 12 Year Parts Warranty when registered within 30 days of installation in a residence, and installed by a Fujitsu Elite contractor

**ACCESSORIES**

UTY-TTRX	3rd Party Thermostate Converter
FJ-IR-WIFI-1NA	Intesis WiFi IR Module
FJ-RC-WIFI-1NA	Intesis WiFi Wired Module
UTY-TFNXZ2	WiFi Interface Module
UTY-RNNUM	Wired Remote
UTY-RVNUM	Wired Remote w/backlight
UTY-RSNUM	Simple Remote
UTY-XWZX	Dry Contact Wire Kit



Indoor Unit ETL#: 3170288  
 Outdoor Unit ETL#: 91987



**SUBMITTAL 30RLXB**

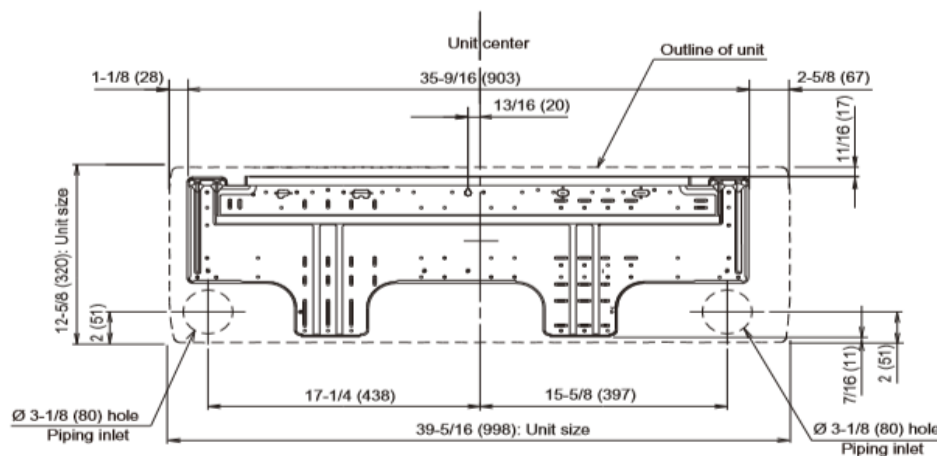


**Inverter Driven Heat Pump**

**Inverter Driven Heat Pump**

FAN DATA				ELECTRICAL SPECIFICATIONS						
Indoor Unit Airflow Rate	Cooling	High	659 (1120)	Voltage/Frequency/Phase			208/230V ~ 60Hz			
		Medium	530 (900)	Voltage Range			187-253V			
		Low	435 (740)	Current	Cooling	Rated	A	13.8		
		Quiet	365 (620)		Heating	Rated		12.3		
	Heating	High	677 (1150)	Maximum Operating Current		Cooling		16.8		
		Medium	530 (900)			Heating		18.8		
		Low	435 (740)	Starting Current			13.8			
		Quiet	365 (620)	MCA			23.3			
Outdoor Unit Airflow Rate		Cooling	2,119 (3,600)	Maximum Circuit Breaker			30			
		Heating	2,119 (3,600)	Input Power	Cooling	Rated	kW	3.16		
Indoor Unit	Cooling	High	47		Heating	Min.-Max.				3.42
		Medium	42			Rated				2.8
		Low	37		Power Factor			Cooling	%	99
		Quiet	32			Heating		99		
	Heating	High	49	<b>OTHER</b>						
		Medium	42	Moisture Removal		pints/h (L/h)	4.6(9.7)			
		Low	37	Energy Star			NO			
		Quiet	33	Drain hose		Material	PVC			
Outdoor Unit		Cooling	52	Size		in (mm)	Ø 15/32 (12) (I.D.), 5/8(16)			
		Heating	55	Operation Range		Cooling	°F (°C)	64 to 90 (18 to 32)		
<b>REFRIGERANT</b>						Heating	%RH	80 or less		
Type		R410A				°F (°C)	88 (30) or less			
Charge	lb oz	4lbs. 10.1oz.								
	kg	2								
Oil Type		POE (RB68)								

**Wall Bracket Data:**



The Fujitsu logo is a worldwide trademark of Fujitsu General Limited. The Halcyon logo and name is a worldwide trademark of Fujitsu General Limited and is a registered trademark in Japan, the USA and other countries or areas. Copyright 2018 Fujitsu General America, Inc. Fujitsu's products are subject to continuous improvements. Fujitsu reserves the right to modify product design, specifications and information in this brochure without notice and without incurring any obligations.

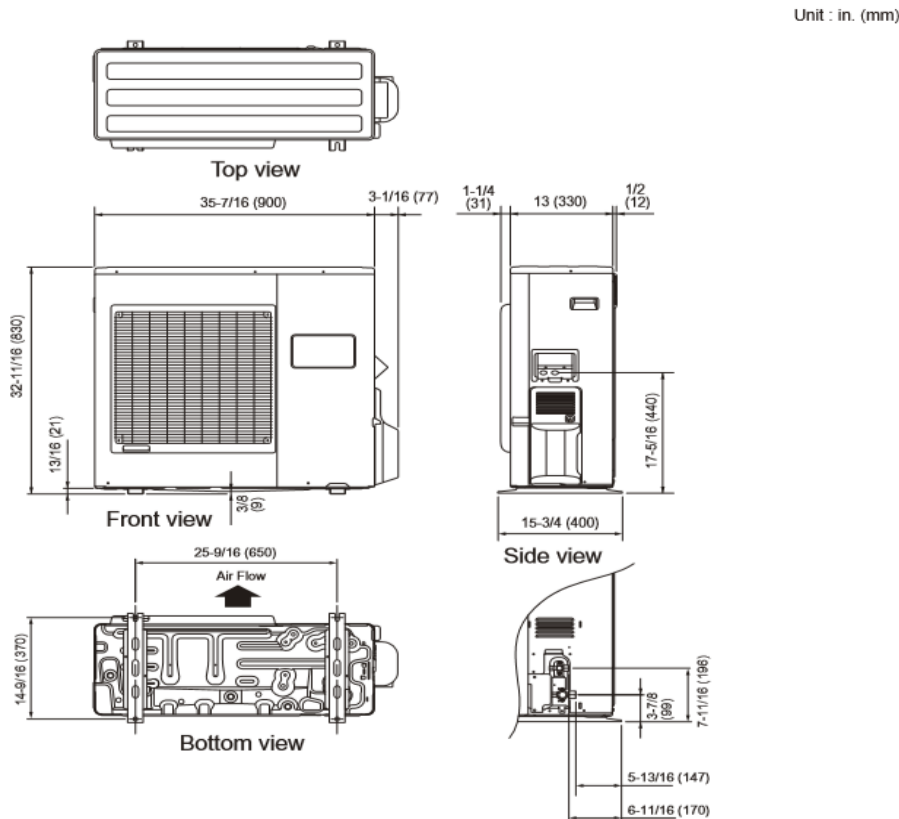
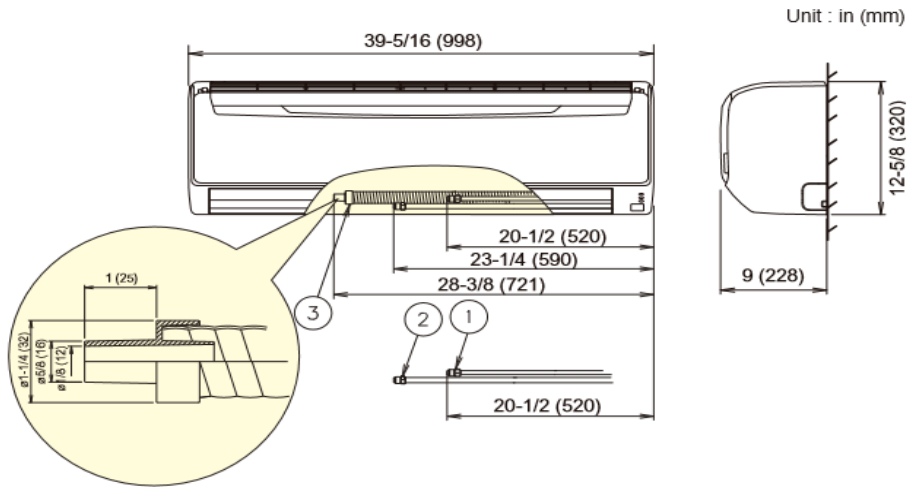
Note: Specifications are based on the following conditions:  
 Cooling: Indoor temperature of 80°F (26.7°C) DB/67°F (19.4°C) WB, and outdoor temperature of 95°F (35°C) DB/75°F (23.9°C) WB. Heating: Indoor temperature of 70°F (21.1°C) DB/60°F (15.6°C) WB, and outdoor temperature of 47°F (8.3°C) DB/43°F (6.1°C) WB. Pipe length: 25ft. (7.5m), Height difference: 0ft. (0m) (Outdoor unit - indoor unit).

Inverter Driven Heat Pump

Inverter Driven Heat Pump

DIMENSIONS

Units: In. (mm)



The Fujitsu logo is a worldwide trademark of Fujitsu General Limited. The Halcyon logo and name is a worldwide trademark of Fujitsu General Limited and is a registered trademark in Japan, the USA and other countries or areas. Copyright 2018 Fujitsu General America, Inc. Fujitsu's products are subject to continuous improvements. Fujitsu reserves the right to modify product design, specifications and information in this brochure without notice and without incurring any obligations.

Note: Specifications are based on the following conditions:  
 Cooling: Indoor temperature of 80°F (26.7°C) DB/67°F (19.4°C) WB, and outdoor temperature of 95°F (35°C) DB/75°F (23.9°C) WB. Heating: Indoor temperature of 70°F (21.1°C) DB/60°F (15.6°C) WB, and outdoor temperature of 47°F (8.3°C) DB/43°F (6.1°C) WB. Pipe length: 25ft. (7.5m), Height difference: 0ft. (0m) (Outdoor unit - indoor unit).