

quality . service
innovation . integrity

260 Series



Features

The "Waste-Mate" series of submersible pumps is designed for use in residential or light commercial dewatering and wastewater applications and can be used to transfer groundwater, effluent or raw sewage. The innovative vortex impeller design reduces the risk of clogging and allows each pump to pass 2" (50 mm) spherical solids. These durable cast iron pumps include a powder coated epoxy finish to prevent corrosion and are designed to provide great heat dissipation from the motor, ensuring a long service life. As with every Zoeller pump, each one is 100% pressure-tested, submerged and run to ensure quality and reliability for years of trouble-free performance!

- Automatic models include a float-operated, 2-pole mechanical switch, a stainless steel float guard and switch arm, and a solid, buoyant polypropylene float, which prevents water from filling the float and causing a malfunction.
- For nonautomatic pumps, variable level control systems and containers of various sizes are available for longer cycles.
- Includes a stainless steel handle for easy installation and removal.
- All models are hermetically sealed to be watertight, dust-tight, and completely submersible.

Reserve Powered Design: For unusual conditions, a reserve safety factor is engineered into the design of every pump.

Specifications

Motor Characteristics

| | |
|------------|------------------------|
| Motor | 1/2 HP |
| Voltage | 115 - 460 V |
| Phase | 1 or 3 Ph |
| Hertz | 60 Hz |
| RPM | 1750 RPM |
| Type | Split phase or 3 phase |
| Insulation | Class A or B |
| Amps | 1.5 - 10.4 Amps |

Pump Characteristics

| | |
|---------------------|--|
| Operation | Automatic or nonautomatic |
| Auto On/ Off Points | 12" / 4" (30 cm / 10 cm) |
| Discharge Size | 2" or 3" NPT |
| Solids Handling | 2" (50 mm) spherical solids |
| Cord Length | 10' (3 m) auto, 15' (5 m) nonauto standard |
| Cord Type | UL listed, 3-wire neoprene cord and plug |
| Max Head | 21.5' (6.6 m) |
| Max Flow Rate | 128 GPM (484 LPM) |
| Max Operating Temp | 130° F (54° C) |
| Cooling | Oil filled |
| Motor Protection | Auto reset thermal overload (1 Ph) |

Materials Characteristics

| | |
|------------------|--------------------------------------|
| Cap | Cast iron |
| Motor Housing | Cast iron |
| Pump Housing | Cast iron |
| Base | Cast iron or engineered plastic |
| Upper Bearing | Sleeve bearing |
| Lower Bearing | Sleeve bearing |
| Mechanical Seals | Carbon and ceramic |
| Impeller Type | Non-clogging vortex |
| Impeller | Engineered plastic with metal insert |
| Hardware | Stainless steel |
| Motor Shaft | AISI 1215 cold rolled steel |
| Gasket | Neoprene |

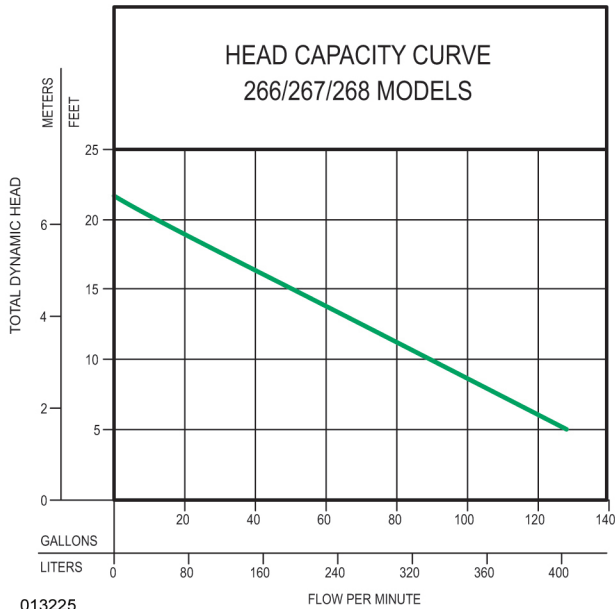


PUMP COMPANY

Zoeller Family of Water Solutions™

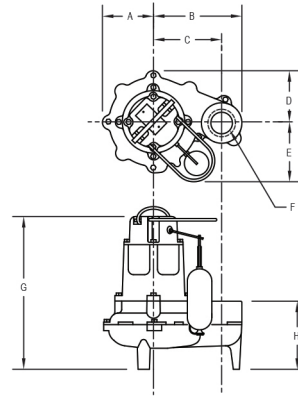
FM0390_Ea

260 Series



013225

FLOW PER MINUTE



SK375

| MODEL | A | B | C | D | E | F | G | H |
|-------|---------------------|-----------------------|-----------------------|---------------------|-----------------------|-------------|-----------------------|----------------------|
| 266 | 4-3/4" (12.1 cm) | 8-5/16" (21.1 cm) | 6 13/32" (16.3 cm) | 4-3/4" (12.1 cm) | 6 15/32" (16.4 cm) | 2" NPT | 14-1/32" (35.6 cm) | 6-3/32" (15.5 cm) |
| 267 | 4-3/4" (12.1 cm) | 8-5/16" (21.1 cm) | 6 13/32" (16.3 cm) | 4-3/4" (12.1 cm) | 6 15/32" (16.4 cm) | 2" NPT | 14-5/8" (37.2 cm) | 6-3/4" (17.1 cm) |
| 268 | 4-3/4" (12.1 cm) | 8-13/32" (21.4 cm) | 6 13/32" (16.3 cm) | 4-3/4" (12.1 cm) | 6 15/32" (16.4 cm) | 2 or 3" NPT | 14-5/8" (37.2 cm) | 9-1/16" (23.0 cm) |

Model

| Model Number | Seal | Mode | Volts | Phase | Amps | HP | Hz | Lbs | Kg |
|--------------|--------|------|---------|-------|------|-----|----|------|----|
| M266/BN266 | Single | Auto | 115 | 1 | 10.4 | 1/2 | 60 | 41 | 19 |
| N266 | Single | Non | 115 | 1 | 10.4 | 1/2 | 60 | 41 | 19 |
| D266/BE266 | Single | Auto | 230 | 1 | 5.5 | 1/2 | 60 | 41 | 19 |
| E266 | Single | Non | 230 | 1 | 5.5 | 1/2 | 60 | 41 | 19 |
| H266 | Single | Auto | 200-208 | 1 | 6.2 | 1/2 | 60 | 41 | 19 |
| I266 | Single | Non | 200-208 | 1 | 6.2 | 1/2 | 60 | 41 | 19 |
| J266 | Single | Non | 200-208 | 3 | 2.6 | 1/2 | 60 | 41 | 19 |
| F266 | Single | Non | 230 | 3 | 2.6 | 1/2 | 60 | 40 | 18 |
| G266 | Single | Non | 460 | 3 | 1.5 | 1/2 | 60 | 40 | 18 |
| M267/BN267 | Single | Auto | 115 | 1 | 10.4 | 1/2 | 60 | 47.5 | 22 |
| N267 | Single | Non | 115 | 1 | 10.4 | 1/2 | 60 | 47.5 | 22 |
| D267/BE267 | Single | Auto | 230 | 1 | 5.5 | 1/2 | 60 | 47.5 | 22 |
| E267 | Single | Non | 230 | 1 | 5.5 | 1/2 | 60 | 47.5 | 22 |
| H267 | Single | Auto | 200-208 | 1 | 6.2 | 1/2 | 60 | 47.5 | 22 |
| I267 | Single | Non | 200-208 | 1 | 6.2 | 1/2 | 60 | 47.5 | 22 |
| J267 | Single | Non | 200-208 | 3 | 2.6 | 1/2 | 60 | 47.5 | 22 |
| F267 | Single | Non | 230 | 3 | 2.6 | 1/2 | 60 | 47.5 | 22 |
| G267 | Single | Non | 460 | 3 | 1.5 | 1/2 | 60 | 47.5 | 22 |
| M268/BN268 | Single | Auto | 115 | 1 | 10.4 | 1/2 | 60 | 51 | 23 |
| N268 | Single | Non | 115 | 1 | 10.4 | 1/2 | 60 | 51 | 23 |
| D268/BE268 | Single | Auto | 230 | 1 | 5.5 | 1/2 | 60 | 51 | 23 |
| E268 | Single | Non | 230 | 1 | 5.5 | 1/2 | 60 | 51 | 23 |
| H268 | Single | Auto | 200-208 | 1 | 6.2 | 1/2 | 60 | 51 | 23 |
| I268 | Single | Non | 200-208 | 1 | 6.2 | 1/2 | 60 | 51 | 23 |
| J268 | Single | Non | 200-208 | 3 | 2.6 | 1/2 | 60 | 51 | 23 |
| F268 | Single | Non | 230 | 3 | 2.6 | 1/2 | 60 | 51 | 23 |
| G268 | Single | Non | 460 | 3 | 1.5 | 1/2 | 60 | 51 | 23 |

Model 266 features a plastic base. Models 267 and 268 feature a cast iron base. Model 267 is available with a cast iron impeller, which is standard on all 3 phase units. Model 268 includes a 2" NPT female and 3" NPT male discharge. BN and BE models include a variable level pump switch. Additional cord lengths are available in 15' (5 m), 35' (11 m) and 50' (15 m).

Your Peace of Mind is Our Top Priority®
3649 Cane Run Rd | Louisville, KY 40211 USA

+1 502-778-2731 | 1-800-928-7867 | Fax: +1 502-774-3624

www.zoeller.com

Product information presented here reflects conditions at time of publication. Consult factory regarding discrepancies or inconsistencies. Copyright Zoeller Company. All rights reserved.