

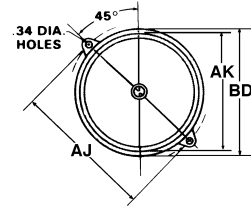
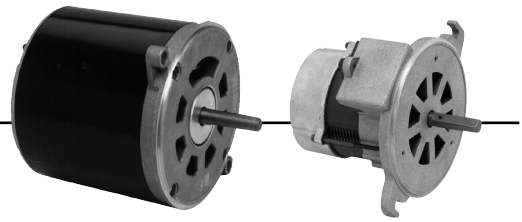
Split Phase and Capacitor Start Oil Burner Totally Enclosed When Mounted

APPLICATIONS:

To meet manufacturer's requirements for oil burners.

FEATURES:

- 40°C Ambient
- 20" Leads, Located At 3 O'Clock Viewed From End Opposite Shaft
- 1.0 Service Factor
- Reversible Rotation, Except As Noted
- Manual Reset Thermal Overload Protector
- Class A Insulation
- 56N Frame Has 2 Holes And Screws For Mounting Outlet Box
- 56N Flange Is Enclosed, 48M And 48N Flange Are Ventilated
- Bearings Have All Angle Thrust System
- **Discount Symbol: DS-3HAC**



NEMA [†] Frame	Bolt Circle AJ	Flange Dia. AK	Outside Dia. BD
48M	6.75"	5.500"	6.25" max
48N, 56N	7.25"	6.275"	7.00" max

OEM Direct Replacements: Beckett^{®†}, Carlin^{®†}, Ducane^{®†}, Wayne Home^{®†} (CWLE)

HP	RPM	Voltage	Catalog Number	List	Bearings	NEMA [†] Frame	Amps	Shaft N	Shaft U	Protector	Total C	SF	Ship Wt. (lbs)	Notes
1/7	3450	115	3274	\$72	Ball	48M	1.7	2.0	0.500	Auto	6.7	10	84,86,H46	
	3450	115	5866	\$112	Ball	48M	2.3	2.0	0.500	Manual	7.2	11	84	

Flange Mounted, Totally Enclosed, Non-Ventilated When Mounted, Without Base

HP	RPM	Voltage	Catalog Number	List	Bearings	NEMA [†] Frame	Amps	Shaft N	Shaft U	Protector	Total C	SF	Ship Wt. (lbs)	Notes
1/8	3450	115	2097	\$124	Ball	48N	2.4	2.0	0.500	Manual	7.1	11		
	1725	115	3196	\$133	Ball	48N	2.4	2.0	0.500	Manual	7.6	14	85	
1/7	3450	115	3083	\$118	Ball	48M	2.6	2.0	0.500	Manual	7.3	11		
1/6	1725	115	3252	\$145	Ball	48N	3.1	2.0	0.500	Manual	7.6	15		
1/4	3450	115	2302	\$162	Ball	48N	3.7	2.0	0.500	Manual	8.3	15		
1/3	3450	115	2319	\$190	Ball	48N	4.8	2.0	0.500	Manual	10.5	18	78	
	1725	115	3580	\$328	Ball	56N	4.8	2.3	0.500	Manual	10.5	25	77	

Note 77 5/8" Shaft Adapter And Key Packed With Motor
 Note 78 Class B Insulation
 Note 84 Non-Reversible

Note 85 Removable Face Plate
 Note 86 PSC Motor, Capacitor Included
 Note H46 3.7" Body

† All marks shown within this document are properties of their respective owners.

