

**Features**

- Pressure-balancing diaphragm technology maintains outlet temperature within +/-3°F during water pressure fluctuations
- Antiscald protection
- A single handle controls both on/off activation and temperature setting
- Includes shower arm and flange
- For use with any KOHLER showerhead (sold separately)
- Coordinates with other products in the Parallel collection

**Material**

- Premium material construction with metal handle ensures reliability and durability
- KOHLER finishes resist corrosion and tarnishing

**Installation**

- Trim only; requires valve to complete installation (sold separately)

**Recommended Products/Accessories**

K-23723 Faucet cleaner

**Optional Products/Accessories**

K-10350 Deep rough-in kit  
 K-10351 Test cap for K-8300 Series valve bodies  
 1307346 Retro mixer cap for K-304 Rite-Temp valve  
 1362395 Retro mixer cap for K-2971 HiFlow Rite-Temp valve

**Codes/Standards**

ASME A112.18.1/CSA B125.1

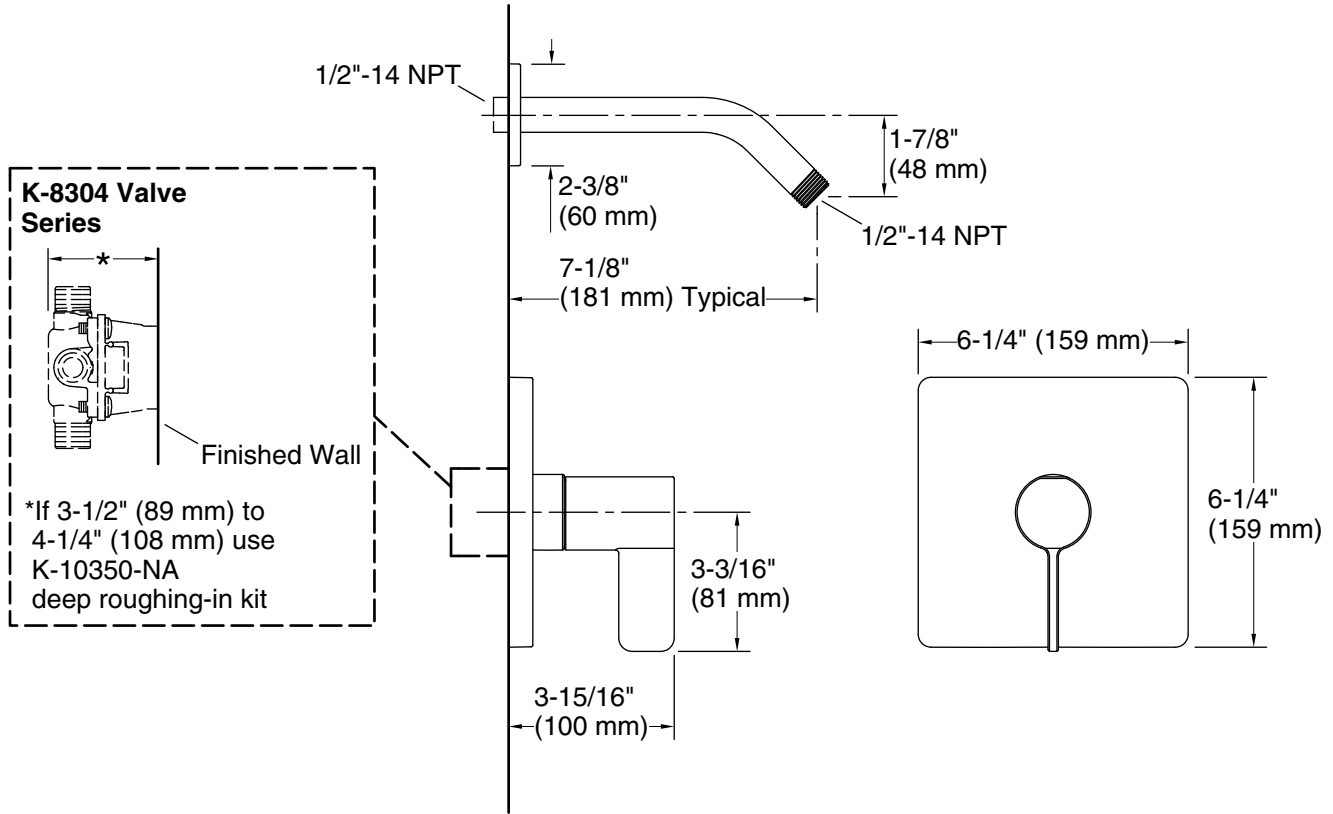
**KOHLER® Faucet Lifetime Limited Warranty**

See website for detailed warranty information.

**Available Colors/Finishes**

*Color tiles intended for reference only.*

Color	Code	Description
	CP	Polished Chrome
	AF	Vibrant™ French Gold
	BN	Vibrant™ Brushed Nickel
	BV	Vibrant™ Brushed Bronze
	BL	Matte Black
	2MB	Vibrant™ Brushed Moderne Brass
	TT	Vibrant™ Titanium



**Technical Information**

All product dimensions are nominal.

Drain included: No

**Notes**

Install this product according to the installation instructions.